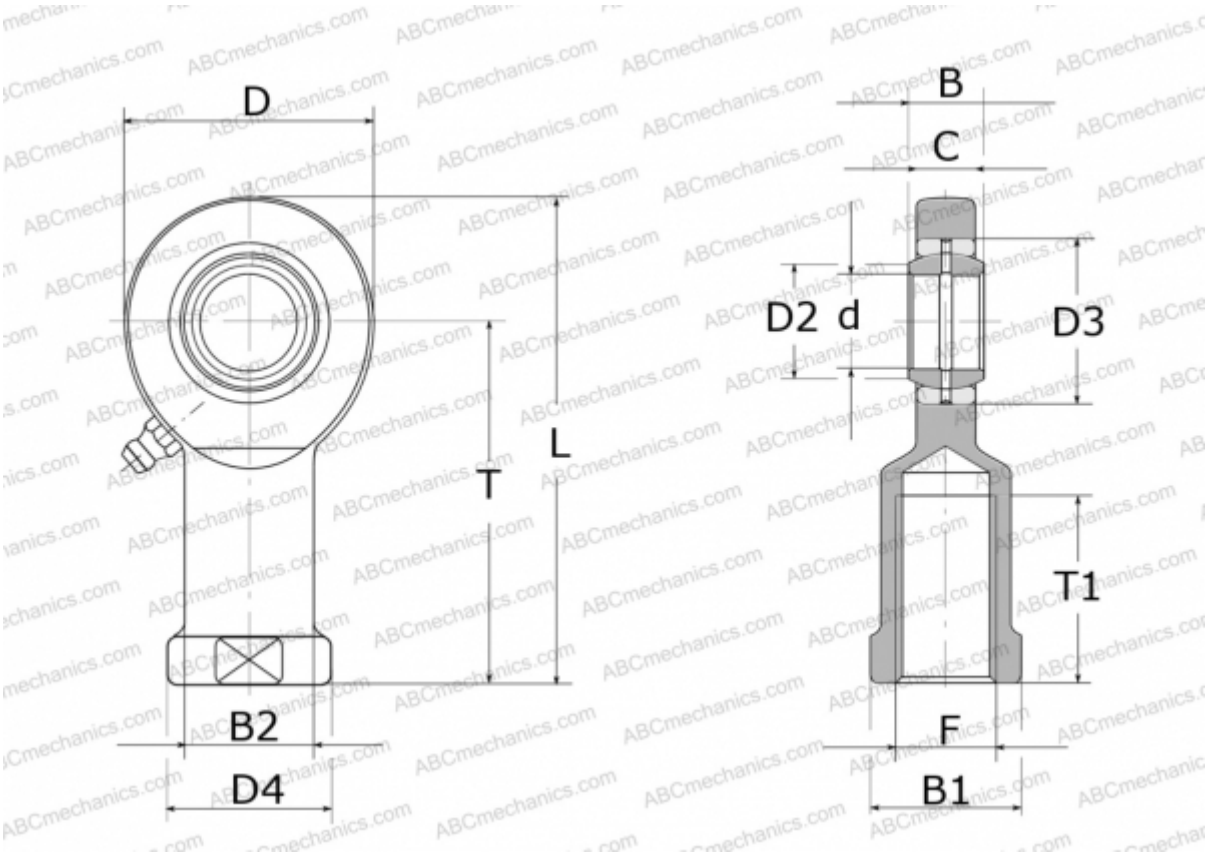




GIR12-DO ELGES

TYPE: Plain bearings, Spherical plain bearings and rod ends, Rod ends, Requiring maintenance, With internal thread, open design, right hand thread, series GIR.-DO (INA)



Technical specification

DIMENSIONS, MM

| | |
|----|--------|
| d | 12,000 |
| D | 34,000 |
| D2 | 14,900 |
| D3 | 22,000 |
| D4 | 22,000 |
| B | 10,000 |
| B1 | 19,000 |
| B2 | 17,500 |
| L | 67,000 |
| T | 50,000 |
| T1 | 23,000 |
| C | 8,000 |
| F | M12 |

WEIGHT, KG 0,100

MANUFACTURER

[ELGES](#)

