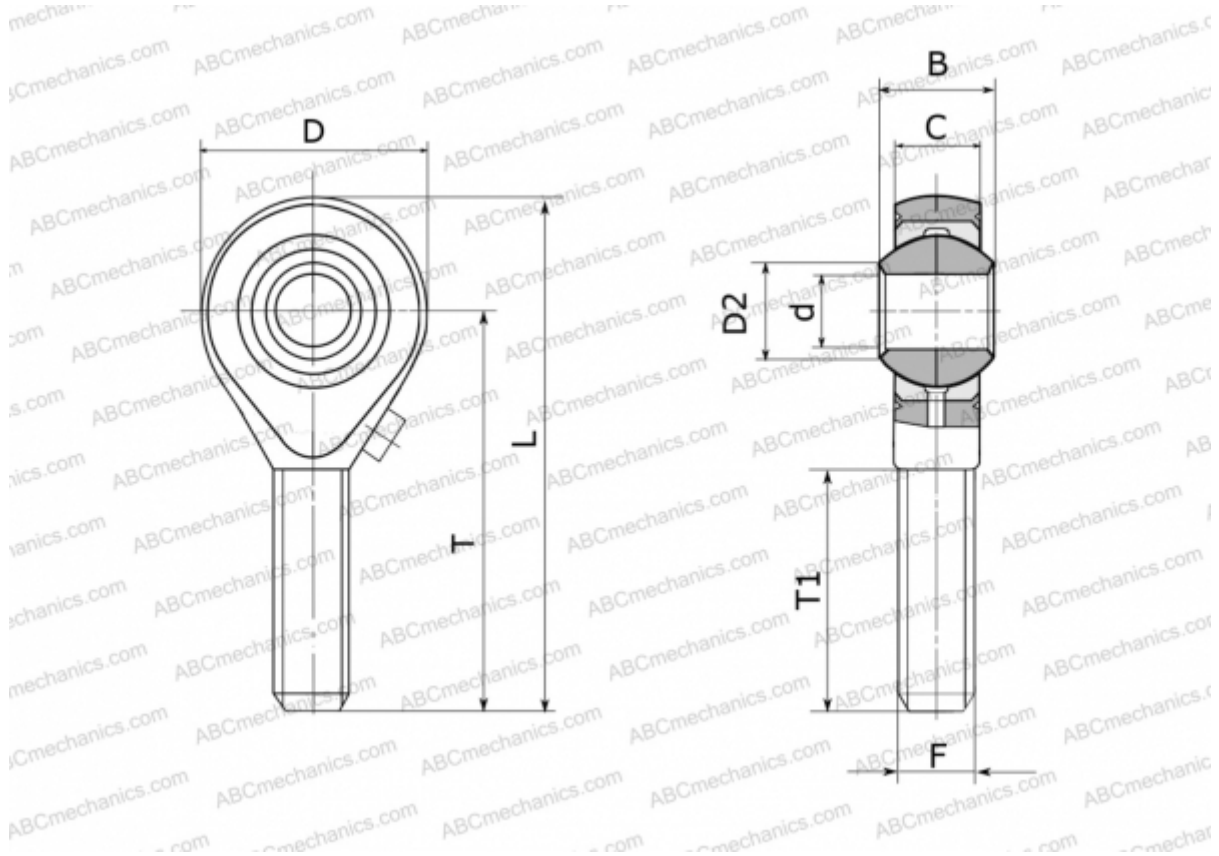


GALS 6 FLURO

TYPE: Plain bearings, Spherical plain bearings and rod ends, Rod ends, Requiring maintenance, With external thread, open design, left hand thread, series GALS (FLURO)



Technical specification

DIMENSIONS, MM

d	6,000
D	20,000
D2	8,900
B	9,000
L	46,000
T	36,000
T1	21,000
C	6,750
F	M 6

WEIGHT, KG 0,020

MANUFACTURER [FLURO](#)