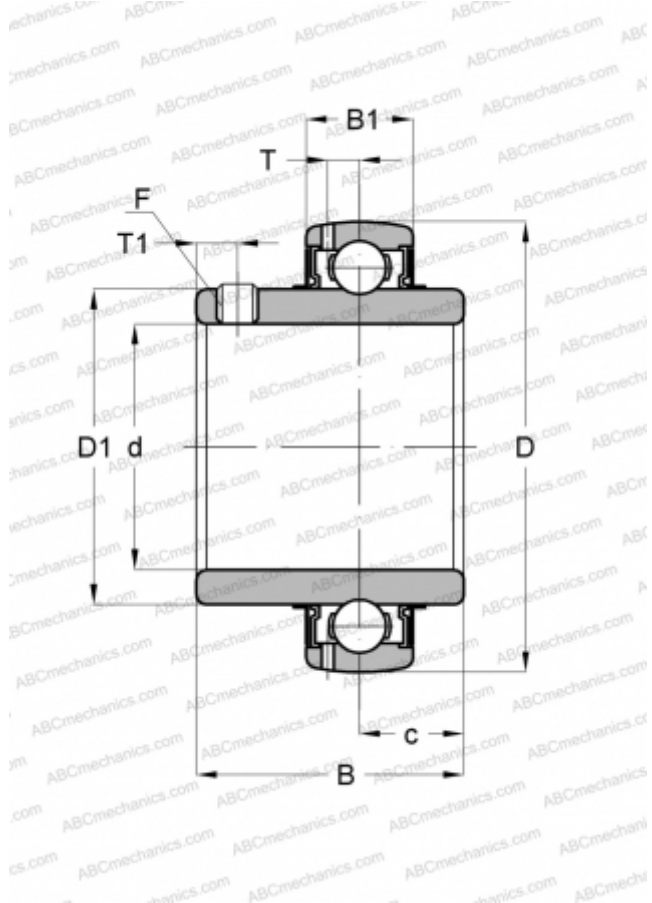




YAR 213-2F SKF

Insert bearings

TYPE: Ball bearings, Radial insert bearings, Grub screw to inner ring, Spherical outer ring, Series YAR, NBR contact seal and additional plain flinger on both sides (SKF)



Technical specification

DIMENSIONS, MM

d	65,000
D	120,000
D1	82,500
B	68,300
C	27,000

WEIGHT, KG

1,700

MANUFACTURER

[SKF](#)

CALCULATION DATA

Basic dynamic load rating, C	57,200 kN
Basic static load rating, Co	40,000 kN
Fatigue load limit, Pu	1,700 kN
Limiting speed	3000 r/min

