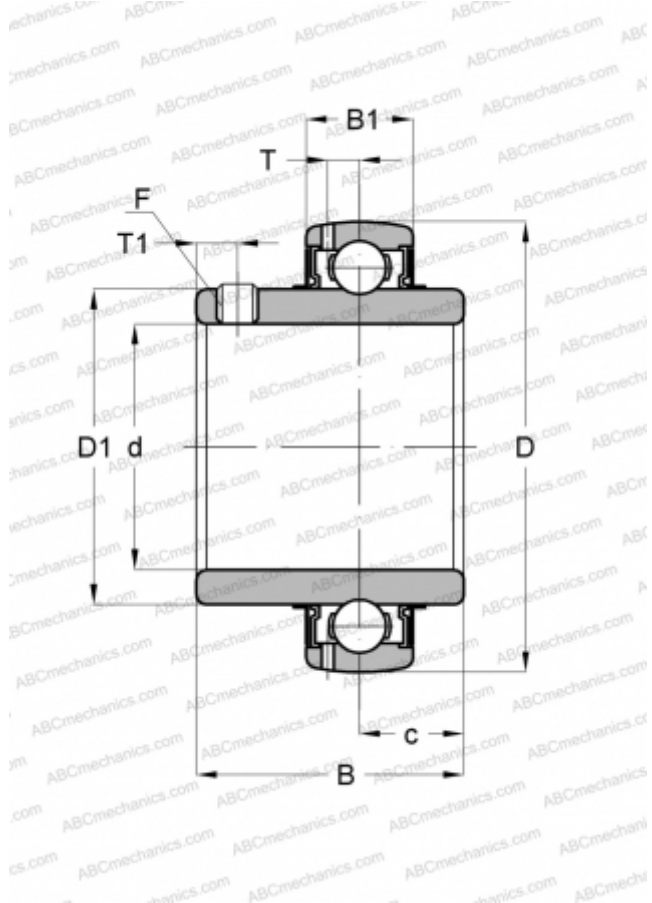




## YAR 214-2F SKF

Insert bearings

TYPE: Ball bearings, Radial insert bearings, Grub screw to inner ring, Spherical outer ring, Series YAR, NBR contact seal and additional plain flinger on both sides (SKF)



### Technical specification

#### DIMENSIONS, MM

|    |         |
|----|---------|
| d  | 70,000  |
| D  | 125,000 |
| D1 | 87,000  |
| B  | 69,900  |
| C  | 28,000  |

#### WEIGHT, KG

1,900

#### MANUFACTURER

[SKF](#)

#### CALCULATION DATA

|                              |            |
|------------------------------|------------|
| Basic dynamic load rating, C | 62,400 kN  |
| Basic static load rating, Co | 45,000 kN  |
| Fatigue load limit, Pu       | 1,860 kN   |
| Limiting speed               | 2800 r/min |

