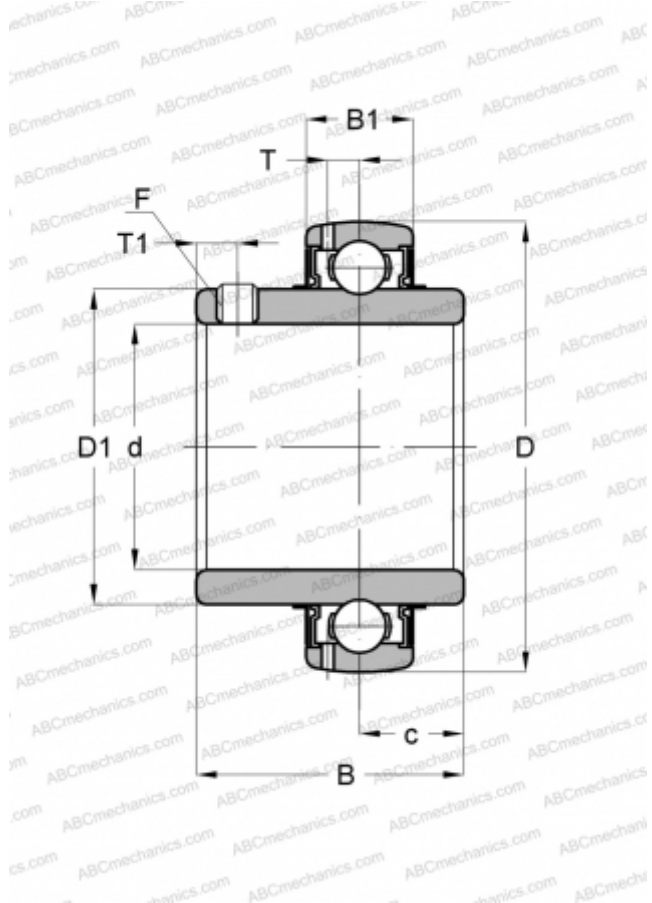




YAR 216-2F SKF

Insert bearings

TYPE: Ball bearings, Radial insert bearings, Grub screw to inner ring, Spherical outer ring, Series YAR, NBR contact seal and additional plain flinger on both sides (SKF)



Technical specification

DIMENSIONS, MM

d	80,000
D	140,000
D1	97,400
B	77,800
C	30,000

WEIGHT, KG

2,700

MANUFACTURER

[SKF](#)

CALCULATION DATA

Basic dynamic load rating, C	72,800 kN
Basic static load rating, Co	53,000 kN
Fatigue load limit, Pu	2,160 kN
Limiting speed	2400 r/min

