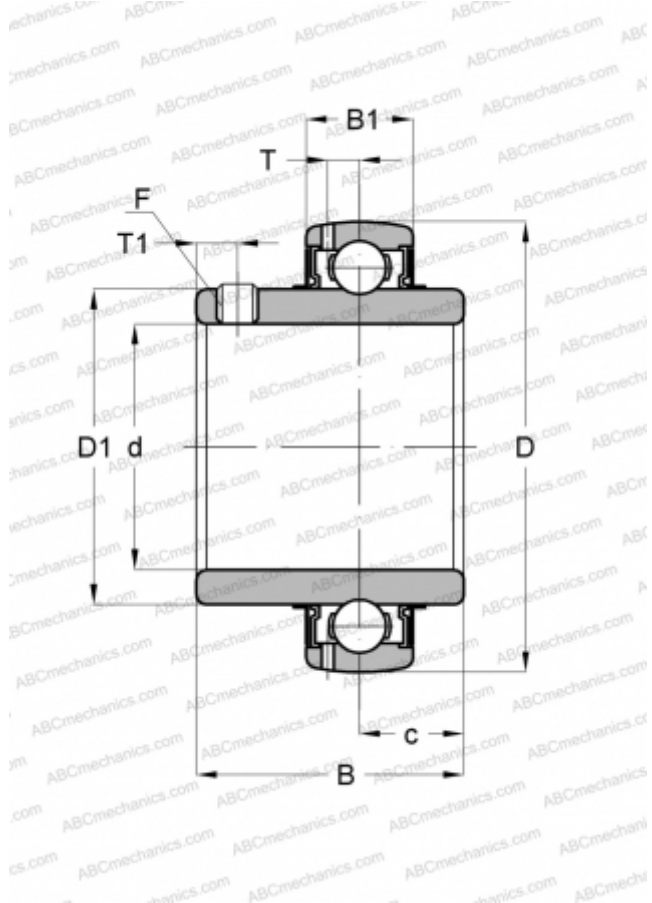




YAR 218-2F SKF

Insert bearings

TYPE: Ball bearings, Radial insert bearings, Grub screw to inner ring, Spherical outer ring, Series YAR, NBR contact seal and additional plain flinger on both sides (SKF)



Technical specification

DIMENSIONS, MM

d	90,000
D	160,000
D1	112,000
B	89,000
C	36,000

WEIGHT, KG

4,100

MANUFACTURER

[SKF](#)

CALCULATION DATA

Basic dynamic load rating, C	95,600 kN
Basic static load rating, Co	72,000 kN
Fatigue load limit, Pu	2,700 kN
Limiting speed	2000 r/min

