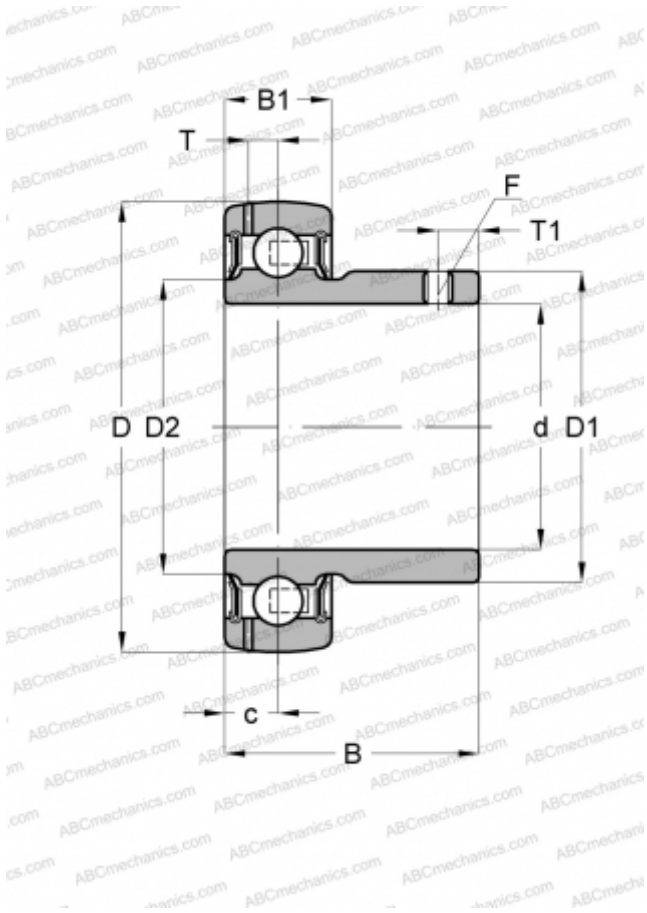


YAT 203 SKF

Insert bearings

TYPE: Ball bearings, Radial insert bearings, Grub screw to inner ring, Spherical outer ring, Series YAT (SKF)



Technical specification

DIMENSIONS, MM

d	17,000
D	40,000
D1	24,200
B	22,100
B1	12,000

WEIGHT, KG

0,070

MANUFACTURER

[SKF](#)

CALCULATION DATA

Basic dynamic load rating, C	9,560 kN
Basic static load rating, Co	4,750 kN
Fatigue load limit, Pu	0,200 kN
Limiting speed	9500 r/min