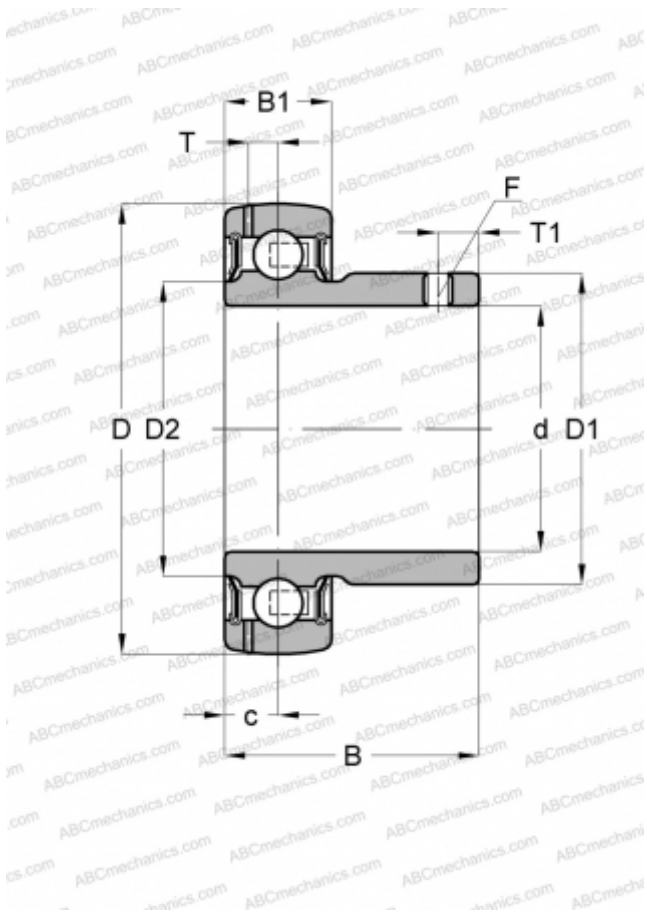


YAT 210 SKF

Insert bearings

TYPE: Ball bearings, Radial insert bearings, Grub screw to inner ring, Spherical outer ring, Series YAT (SKF)



Technical specification

DIMENSIONS, MM

d	50,000
D	90,000
D1	62,500
B	38,800
B1	22,000

WEIGHT, KG

0,540

MANUFACTURER

[SKF](#)

CALCULATION DATA

Basic dynamic load rating, C	35,100 kN
Basic static load rating, Co	23,200 kN
Fatigue load limit, Pu	0,980 kN
Limiting speed	4000 r/min