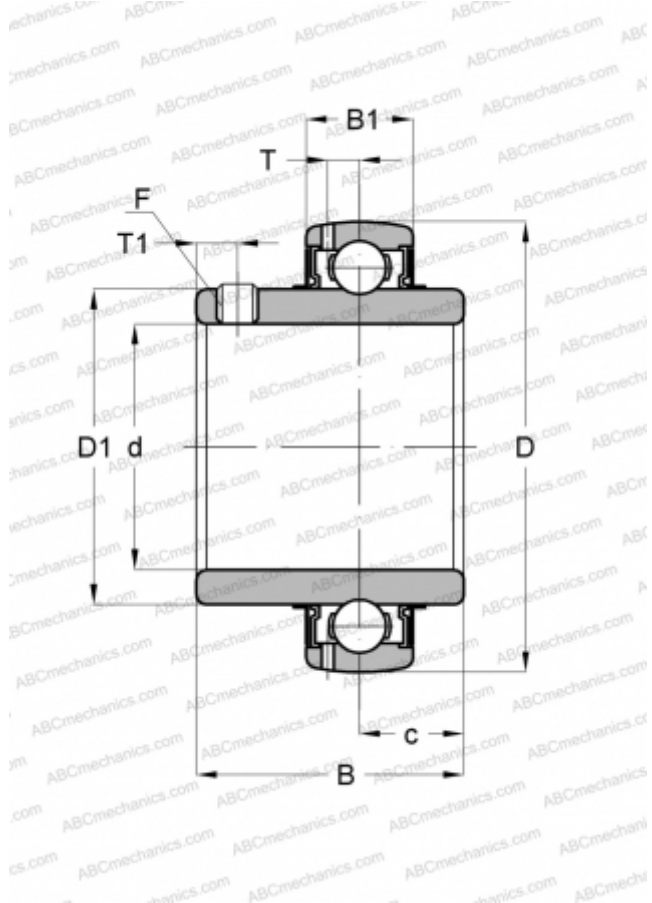




## YAR 211-200-2F SKF

Insert bearings

TYPE: Ball bearings, Radial insert bearings, Grub screw to inner ring, Spherical outer ring, Series YAR, NBR contact seal and additional plain flinger on both sides, inch (SKF)



### Technical specification

#### DIMENSIONS, MM

d	50,800
D	100,000
D1	69,000
B	55,600
C	25,000

#### WEIGHT, KG

1,100

#### MANUFACTURER

[SKF](#)

#### CALCULATION DATA

Basic dynamic load rating, C	43,600 kN
Basic static load rating, Co	29,000 kN
Fatigue load limit, Pu	1,250 kN
Limiting speed	3600 r/min

