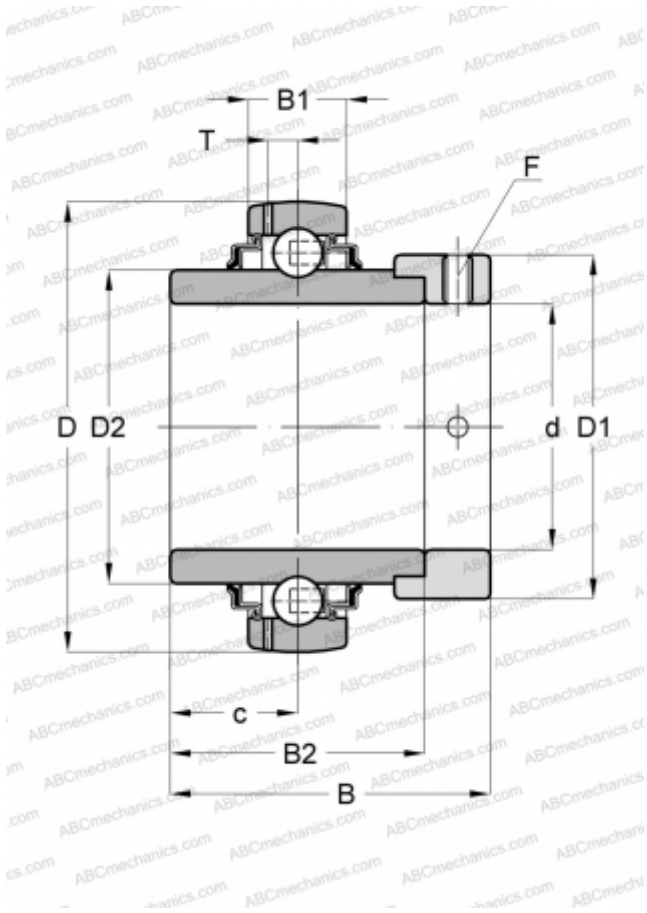


YEL 209-2F SKF

Insert bearings

TYPE: Ball bearings, Radial insert bearings, With eccentric locking collar, Spherical outer ring, Series YEL (SKF)



Technical specification

DIMENSIONS, MM

d	45,000
D	85,000
D1	62,000
D2	56,800
B	56,300
B1	22,000
B2	42,800

WEIGHT, KG

0,740

MANUFACTURER

[SKF](#)

CALCULATION DATA

Basic dynamic load rating, C	33,200 kN
Basic static load rating, Co	21,600 kN
Fatigue load limit, Pu	0,915 kN
Limiting speed	4300 r/min