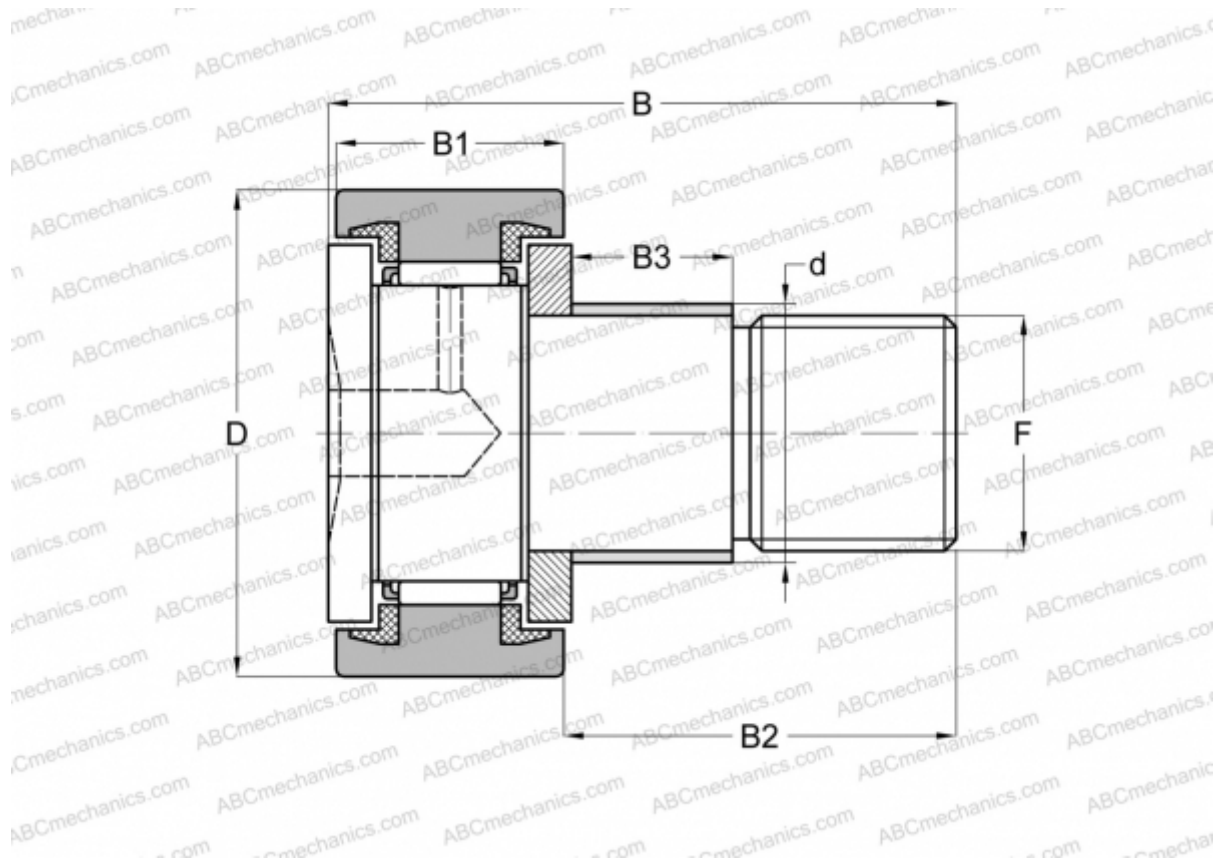


KRE 72 PPX SKF

Cam followers

TYPE: Roller bearings, Stud type track rollers, With axial guidance, with eccentric collar, sealing rings on both sides, cylindrical outer ring



Technical specification

DIMENSIONS, MM

d	28,000
D	72,000
B	80,000
B1	29,000
B2	49,500
F	M 24x1.5

WEIGHT, KG 1,038

MANUFACTURER [SKF](#)

INTERCHANGE

ABC	KRE 72 PPX
INA	KRE 72 PPX

CALCULATION DATA

Basic dynamic load rating, C	26,000 kN
------------------------------	-----------

CALCULATION DATA

Basic static load rating, Co	48,000 kN
Fatigue load limit, Pu	6,000 kN
Limiting speed	2400 r/min