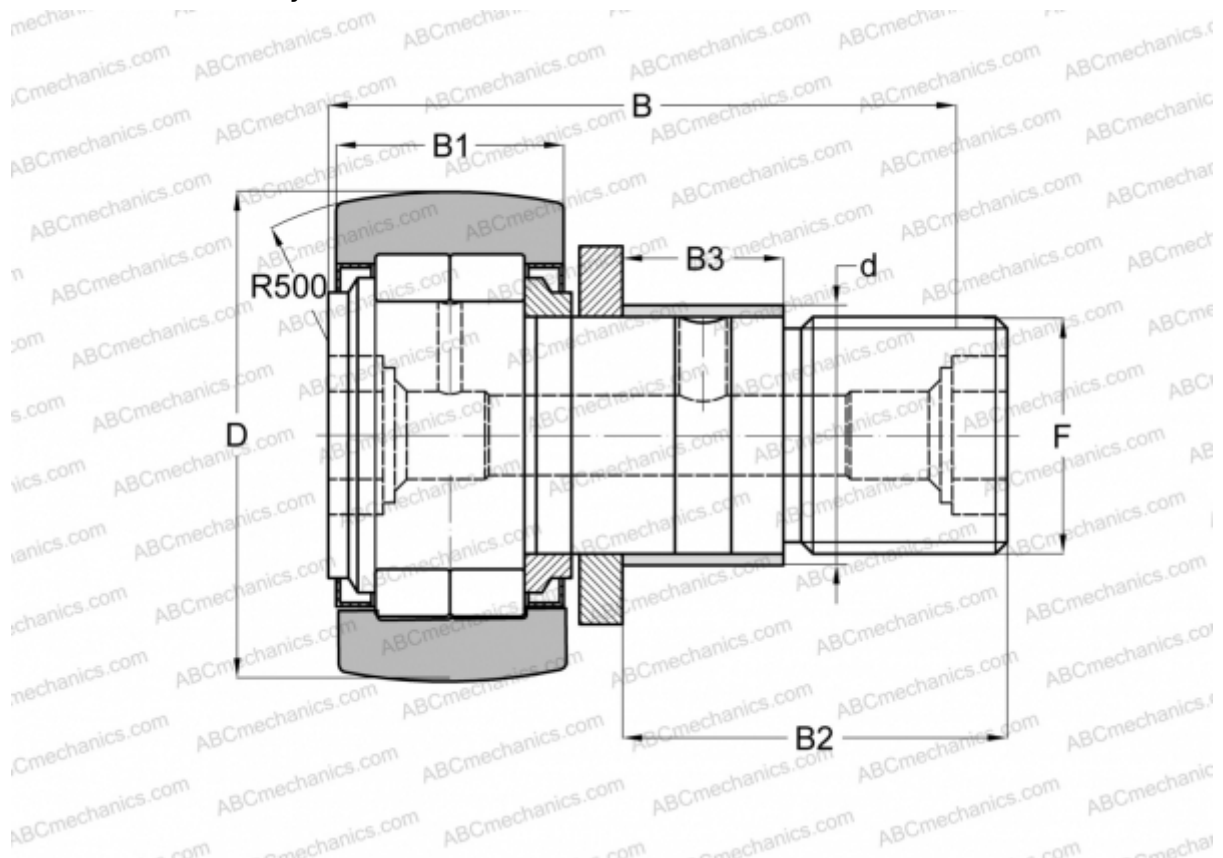


NUKRE 47 INA

Cam followers

TYPE: Roller bearings, Stud type track rollers, With axial guidance, full complement cylindrical roller set, with eccentric collar, labyrinth seals on both sides



Technical specification

DIMENSIONS, MM

d	24,000
D	47,000
B	66,000
B1	24,000
B2	40,500
B3	18,000
F	M20x1,5

WEIGHT, KG 0,399

MANUFACTURER [INA](#)

INTERCHANGE

ABC	NUKRE 47
FAG	NUKRE 47 C
SKF	NUKRE 47 A