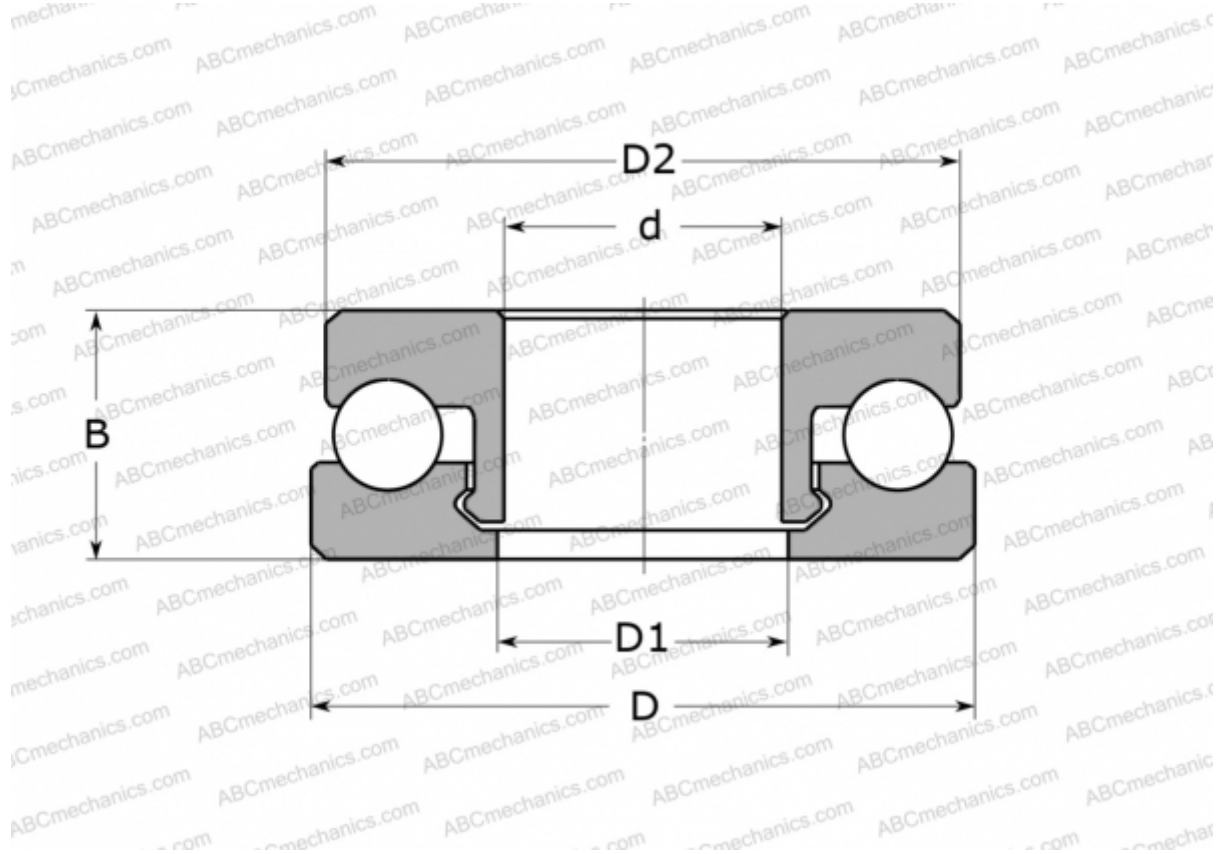


51200 V/HR22T2 SKF

Thrust ball bearings

TYPE: Ball bearings, Thrust ball bearing, Single direction, Polymer, stainless steel ball (SKF)



Technical specification

DIMENSIONS, MM

d	10,000
D	26,000
D1	11,000
D2	25,000
B	11,000

WEIGHT, KG 6,000

MANUFACTURER [SKF](#)

CALCULATION DATA

Basic dynamic load rating, C	0,230 kN
Basic static load rating, Co	0,185 kN
Limiting speed	550 r/min