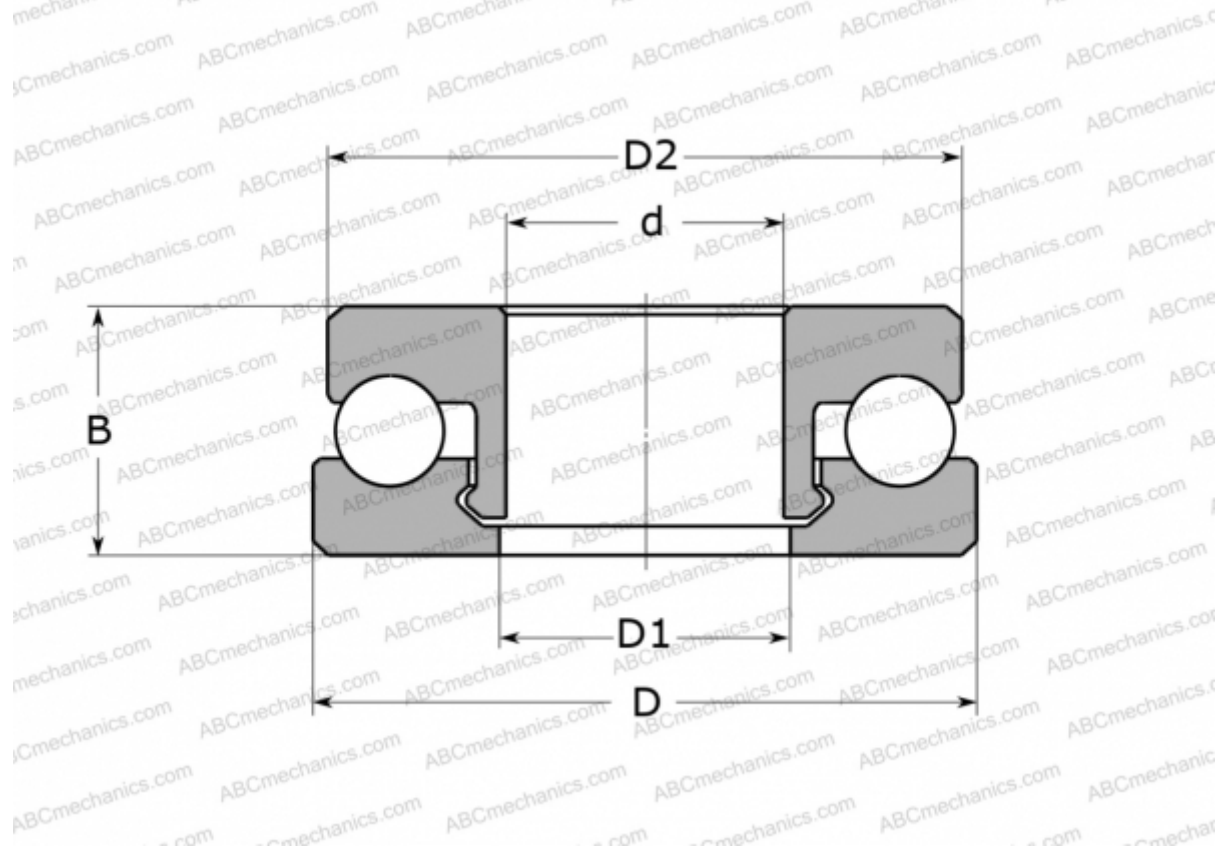


## 51101 V/HR22T2 SKF

Thrust ball bearings

TYPE: Ball bearings, Thrust ball bearing, Single direction, Polymer, stainless steel ball (SKF)



### Technical specification

#### DIMENSIONS, MM

d	12,000
D	26,000
D1	13,000
D2	25,000
B	9,000

**WEIGHT, KG** 4,300

**MANUFACTURER** [SKF](#)

#### CALCULATION DATA

Basic dynamic load rating, C	0,350 kN
Basic static load rating, Co	0,280 kN
Limiting speed	500 r/min