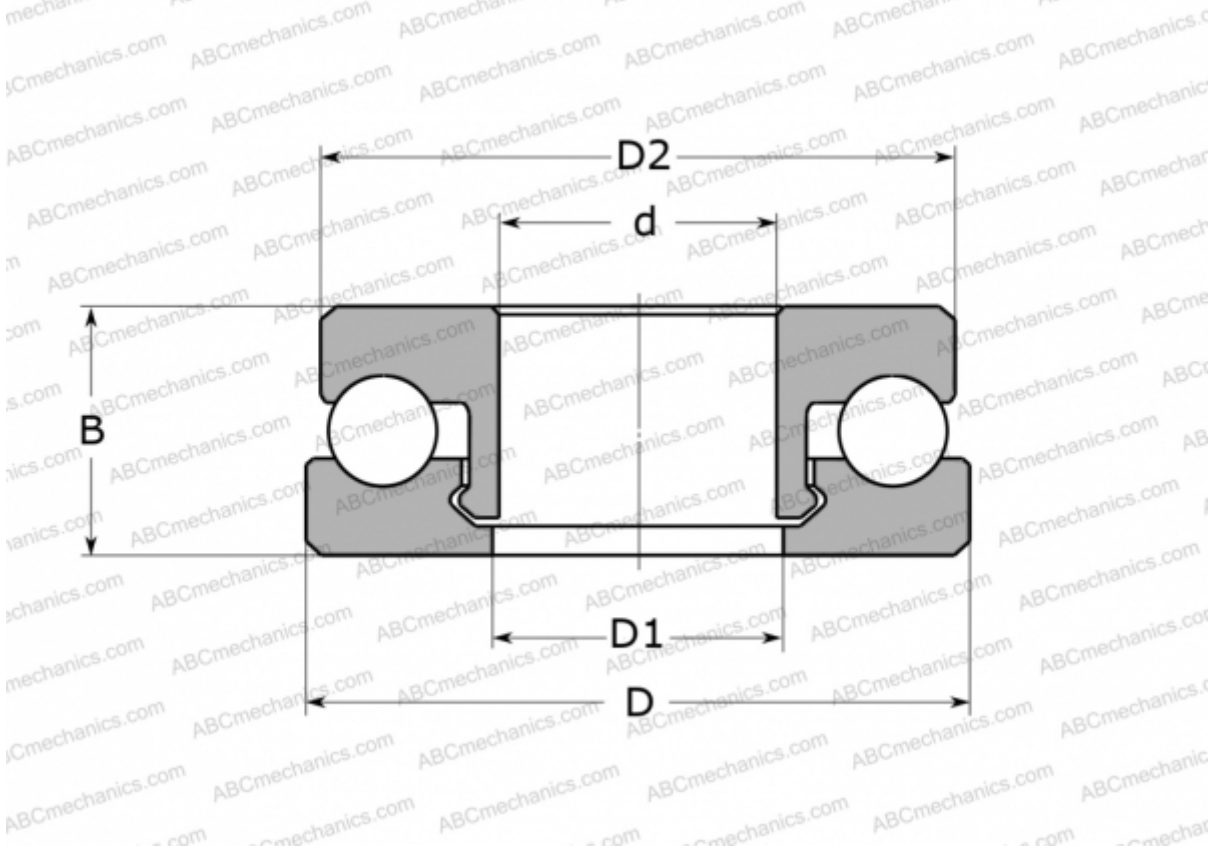




51201 V/HR11T1 SKF

Thrust ball bearings

TYPE: Ball bearings, Thrust ball bearing, Single direction, Polymer, stainless steel ball (SKF)



Technical specification

DIMENSIONS, MM	
d	12,000
D	28,000
D1	13,000
D2	27,000
B	11,000

WEIGHT, KG	9,500
------------	-------

MANUFACTURER	SKF
--------------	---------------------

CALCULATION DATA	
Basic dynamic load rating, C	0,410 kN
Basic static load rating, Co	0,330 kN
Limiting speed	540 r/min

