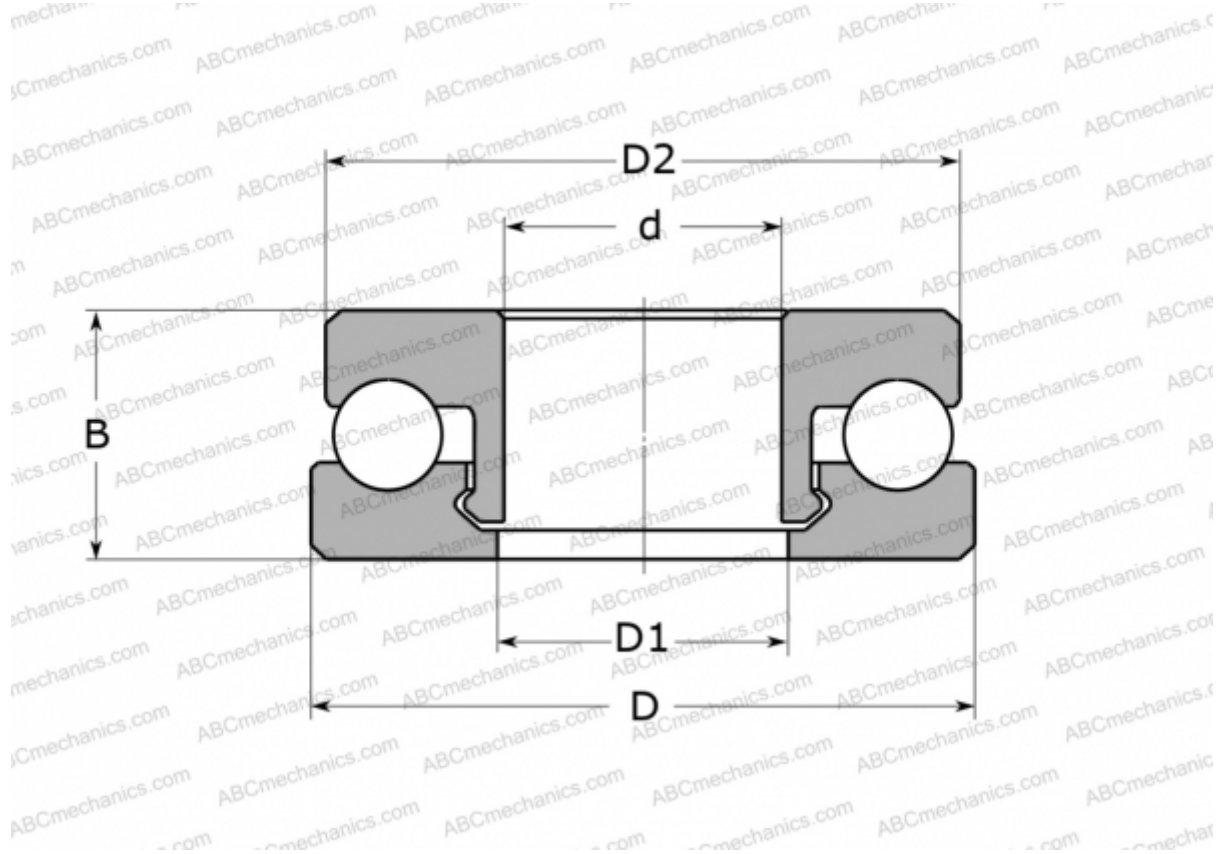


51205 V/HR11T1 SKF

Thrust ball bearings

TYPE: Ball bearings, Thrust ball bearing, Single direction, Polymer, stainless steel ball (SKF)



Technical specification

DIMENSIONS, MM

d	25,000
D	47,000
D1	26,000
D2	46,000
B	15,000

WEIGHT, KG 28,500

MANUFACTURER [SKF](#)

CALCULATION DATA

Basic dynamic load rating, C	0,930 kN
Basic static load rating, Co	0,750 kN
Limiting speed	400 r/min