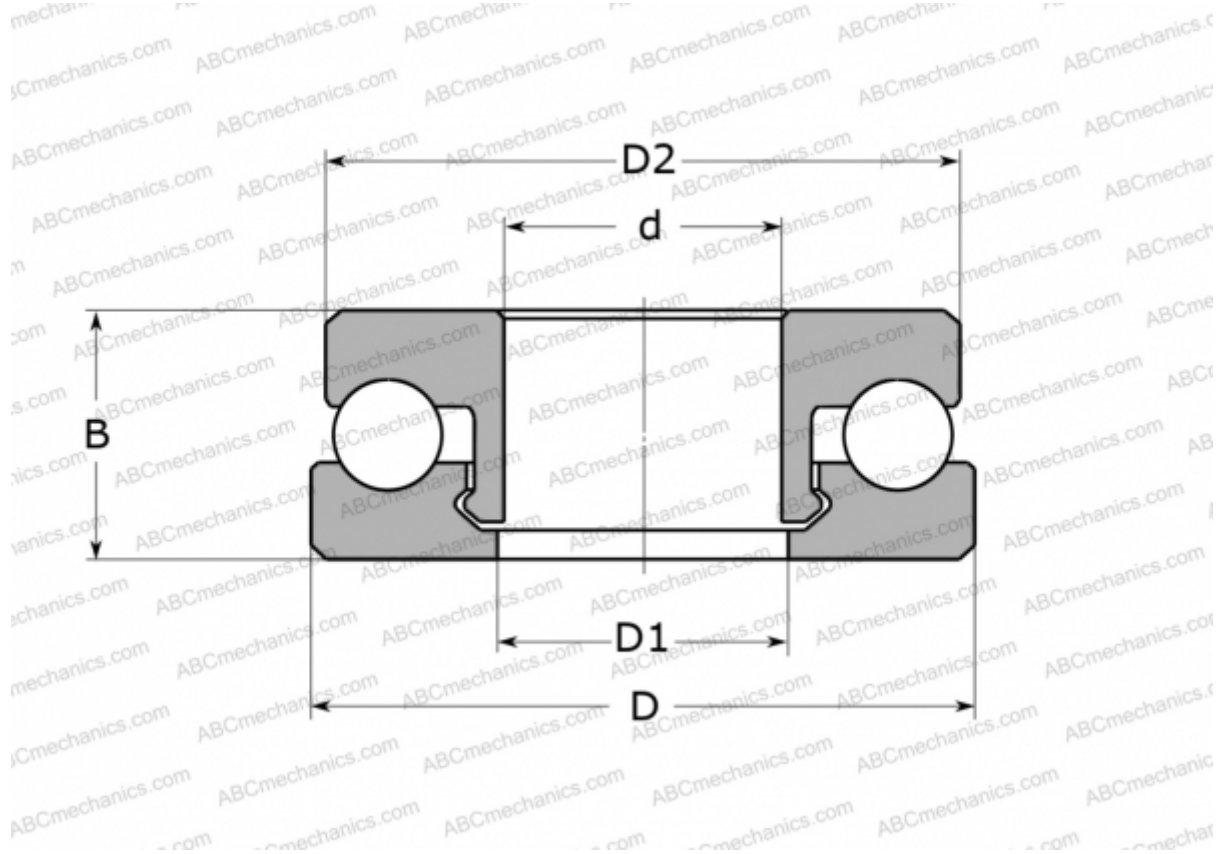


## 51205 V/HR22T2 SKF

Thrust ball bearings

TYPE: Ball bearings, Thrust ball bearing, Single direction, Polymer, stainless steel ball (SKF)



### Technical specification

#### DIMENSIONS, MM

d	25,000
D	47,000
D1	26,000
D2	46,000
B	15,000

**WEIGHT, KG** 22,000

**MANUFACTURER** [SKF](#)

#### CALCULATION DATA

Basic dynamic load rating, C	0,815 kN
Basic static load rating, Co	0,660 kN
Limiting speed	370 r/min