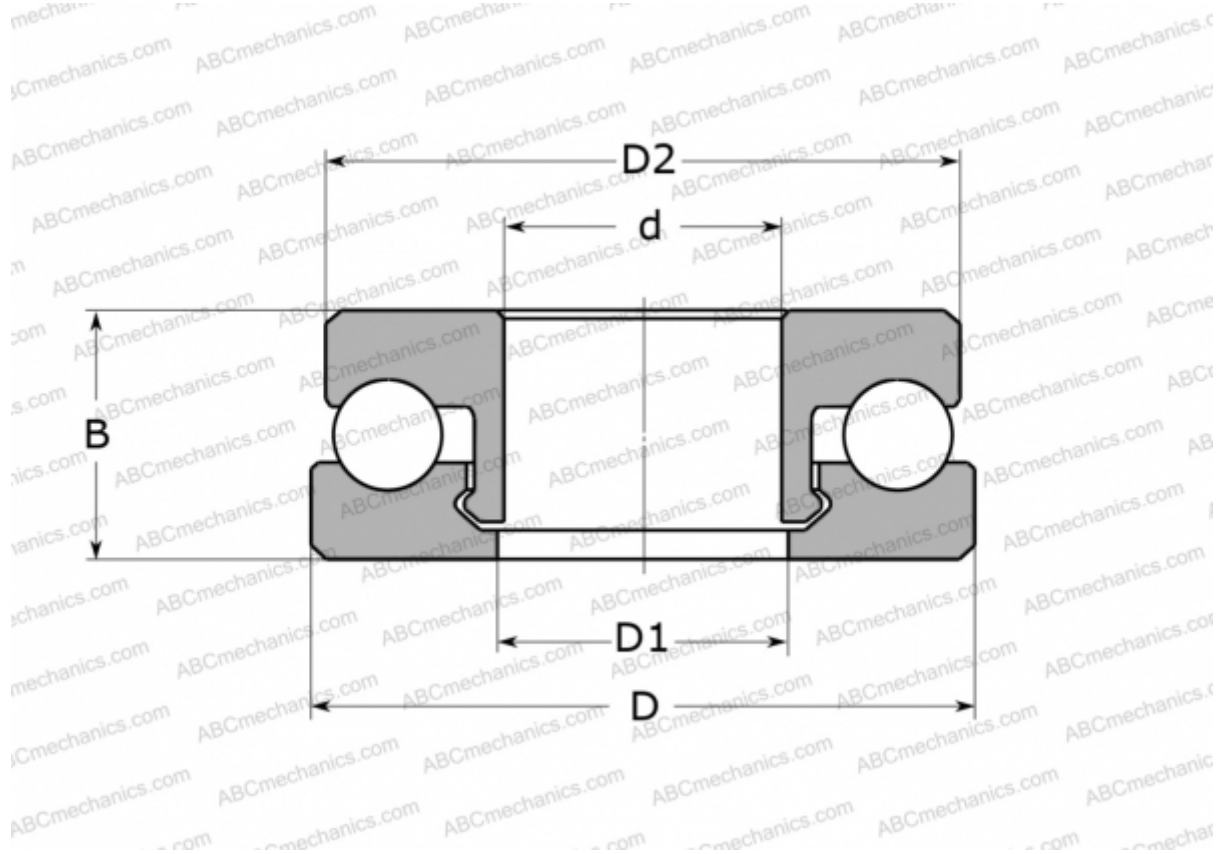


## 51305 V/HR11T1 SKF

Thrust ball bearings

TYPE: Ball bearings, Thrust ball bearing, Single direction, Polymer, stainless steel ball (SKF)



### Technical specification

#### DIMENSIONS, MM

d	25,000
D	52,000
D1	26,000
D2	51,000
B	18,000

**WEIGHT, KG** 46,000

**MANUFACTURER** [SKF](#)

#### CALCULATION DATA

Basic dynamic load rating, C	1,025 kN
Basic static load rating, Co	0,820 kN
Limiting speed	380 r/min