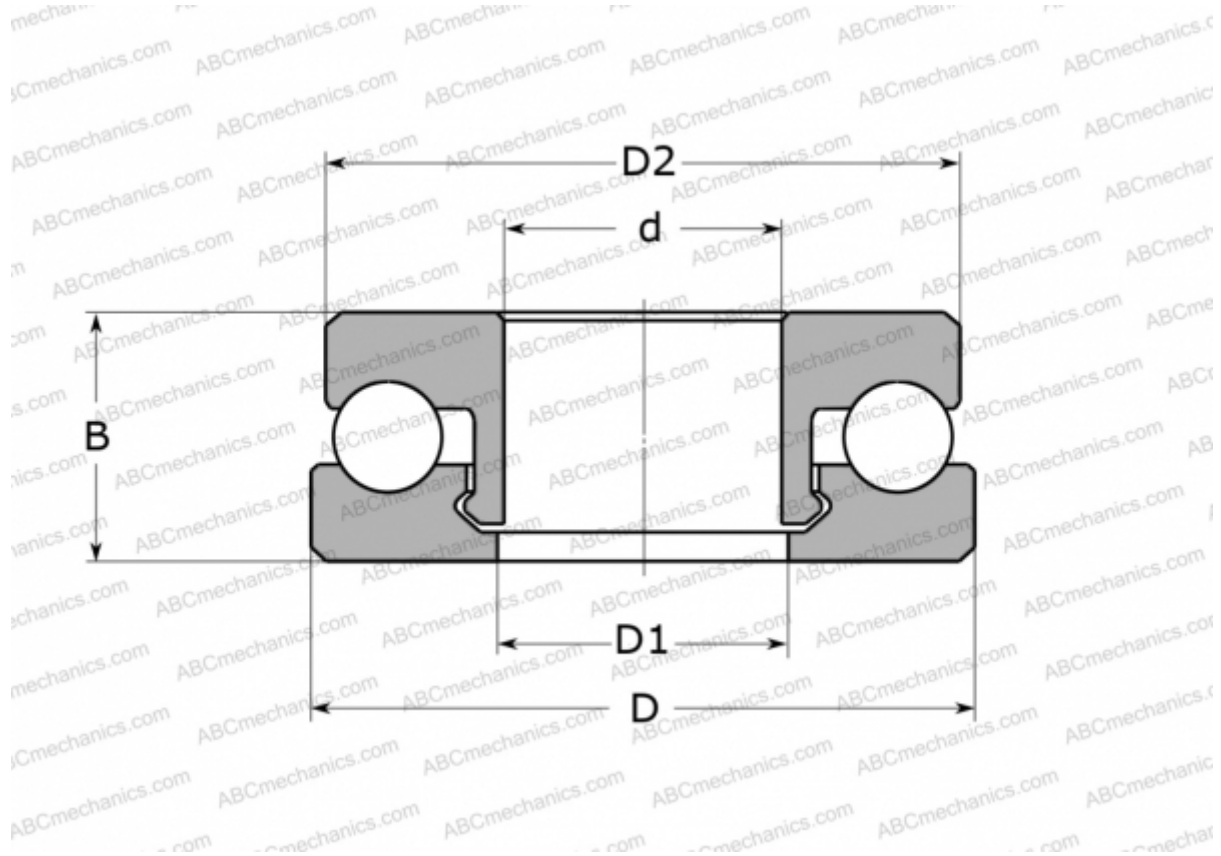


51206 V/HR11T1 SKF

Thrust ball bearings

TYPE: Ball bearings, Thrust ball bearing, Single direction, Polymer, stainless steel ball (SKF)



Technical specification

DIMENSIONS, MM

d	30,000
D	52,000
D1	31,000
D2	51,000
B	16,000

WEIGHT, KG 34,000

MANUFACTURER [SKF](#)

CALCULATION DATA

Basic dynamic load rating, C	1,025 kN
Basic static load rating, Co	0,820 kN
Limiting speed	375 r/min