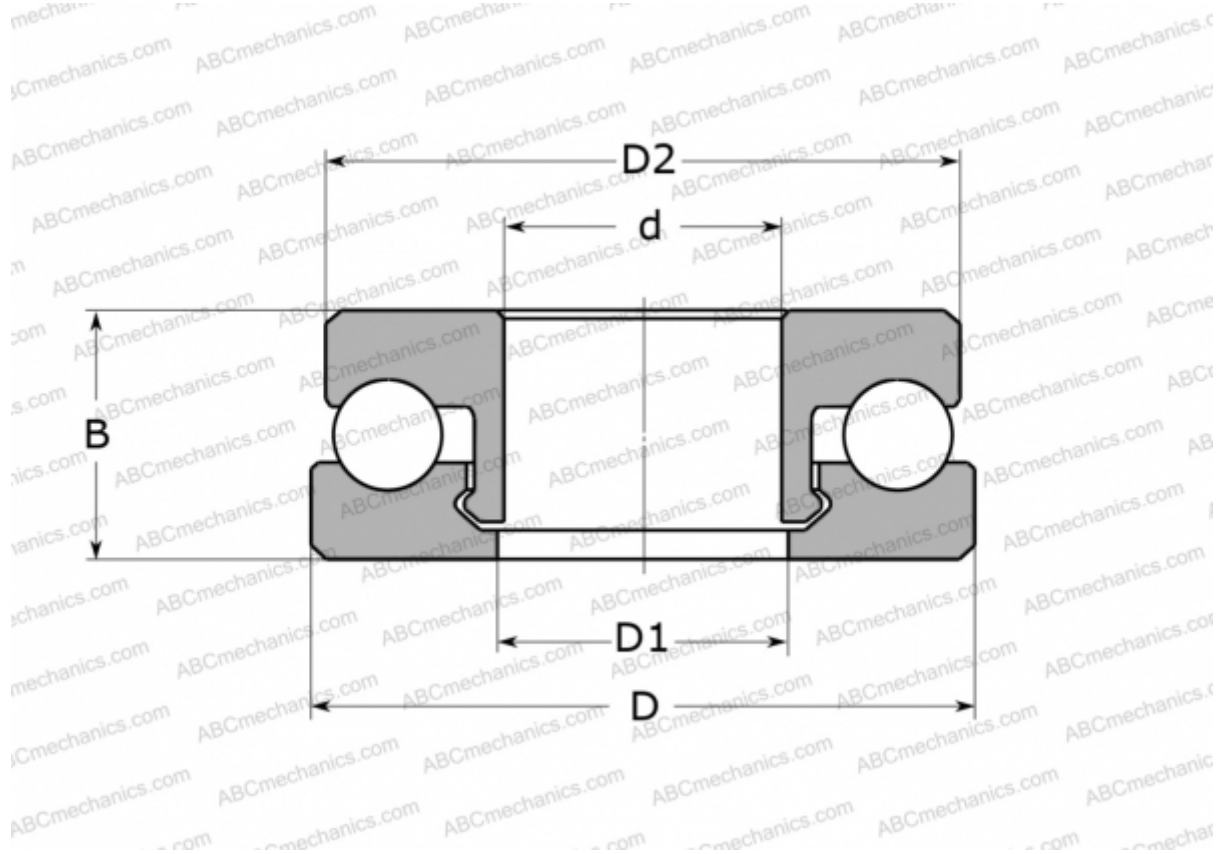


51109 V/HR22T2 SKF

Thrust ball bearings

TYPE: Ball bearings, Thrust ball bearing, Single direction, Polymer, stainless steel ball (SKF)



Technical specification

DIMENSIONS, MM

d	45,000
D	65,000
D1	46,000
D2	64,000
B	14,000

WEIGHT, KG 27,500

MANUFACTURER [SKF](#)

CALCULATION DATA

Basic dynamic load rating, C	1,040 kN
Basic static load rating, Co	0,835 kN
Limiting speed	330 r/min