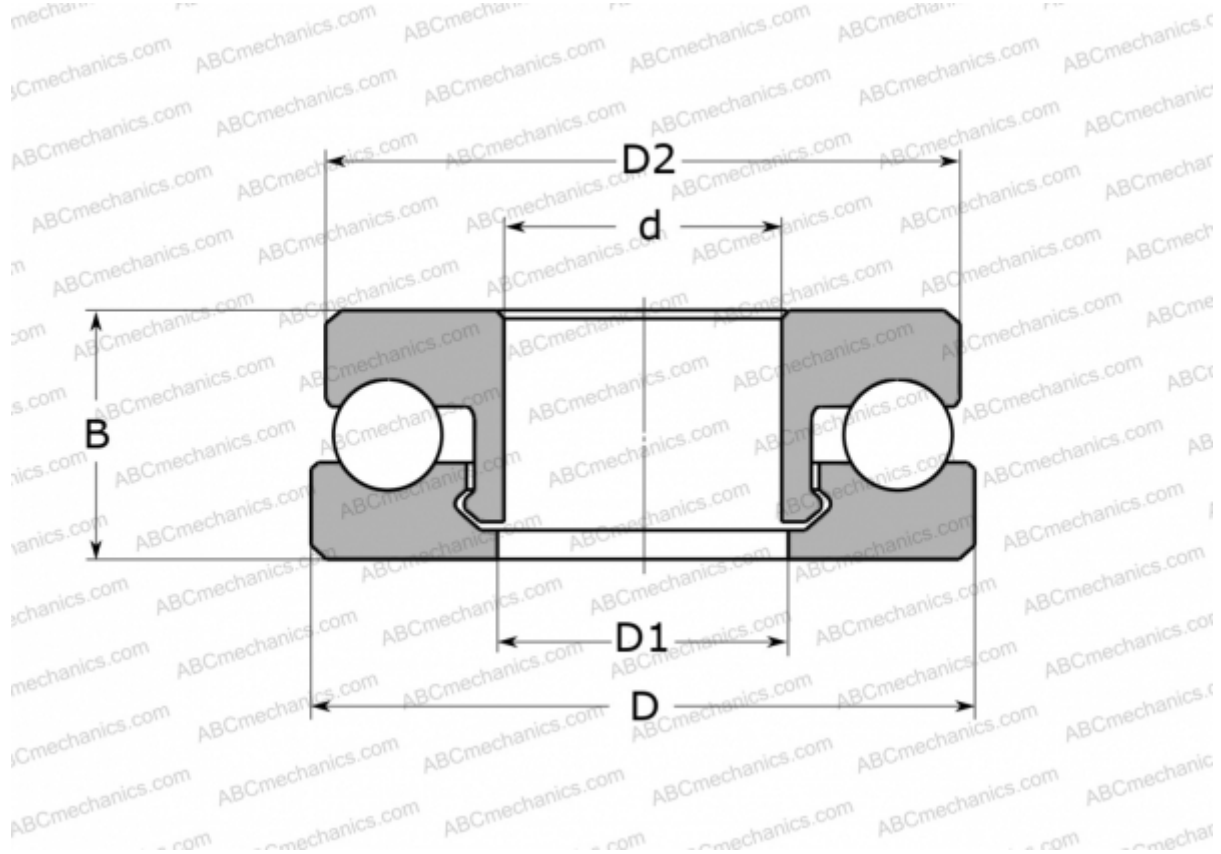


## 51200 V/HR11Q1 SKF

Thrust ball bearings

TYPE: Ball bearings, Thrust ball bearing, Single direction, Polymer, glass ball (SKF)



### Technical specification

#### DIMENSIONS, MM

d	10,000
D	26,000
D1	11,000
D2	25,000
B	11,000

**WEIGHT, KG** 7,900

**MANUFACTURER** [SKF](#)

#### CALCULATION DATA

Basic dynamic load rating, C	0,260 kN
Basic static load rating, Co	0,210 kN
Limiting speed	600 r/min