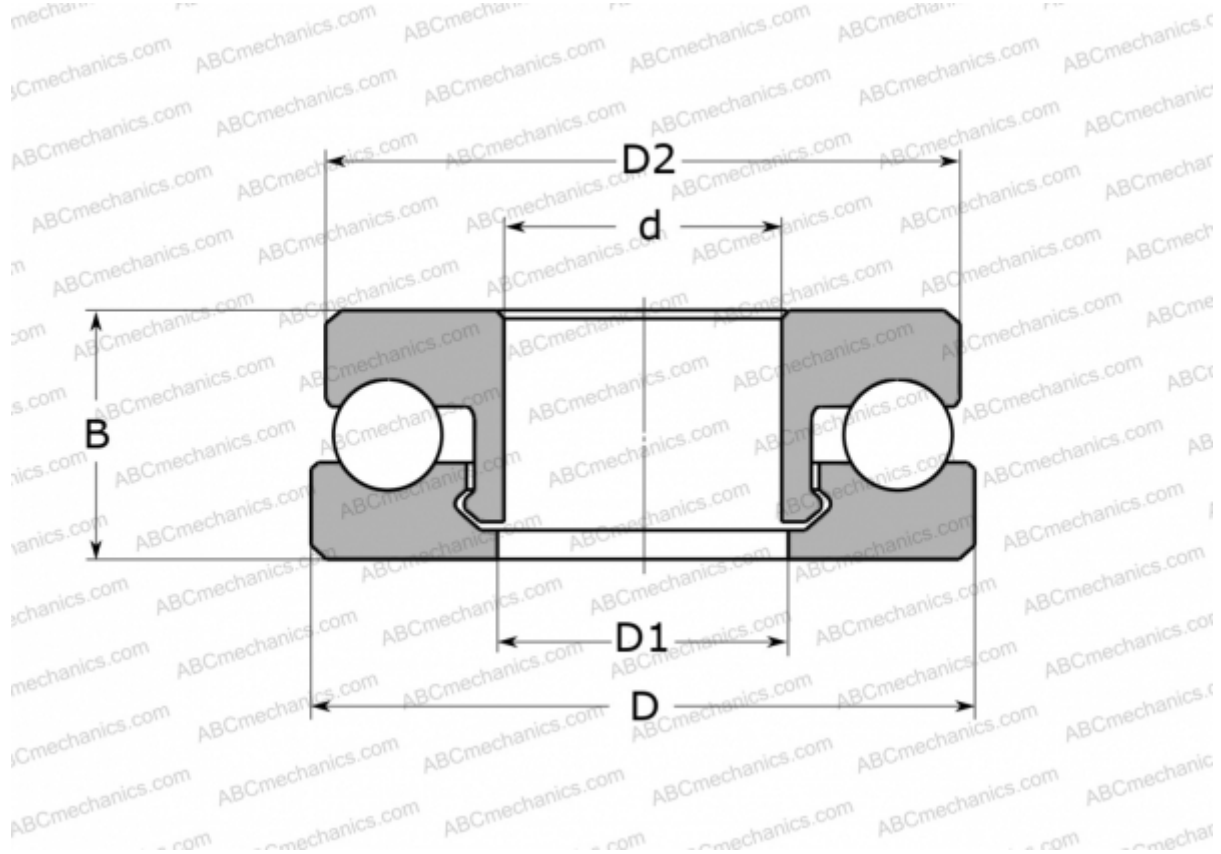


51306V/HR11Q1 SKF

Thrust ball bearings

TYPE: Ball bearings, Thrust ball bearing, Single direction, Polymer, glass ball (SKF)



Technical specification

DIMENSIONS, MM

d	30,000
D	60,000
D1	31,000
D2	59,000
B	21,000

WEIGHT, KG 63,000

MANUFACTURER [SKF](#)

CALCULATION DATA

Basic dynamic load rating, C	1,070 kN
Basic static load rating, Co	0,860 kN
Limiting speed	360 r/min