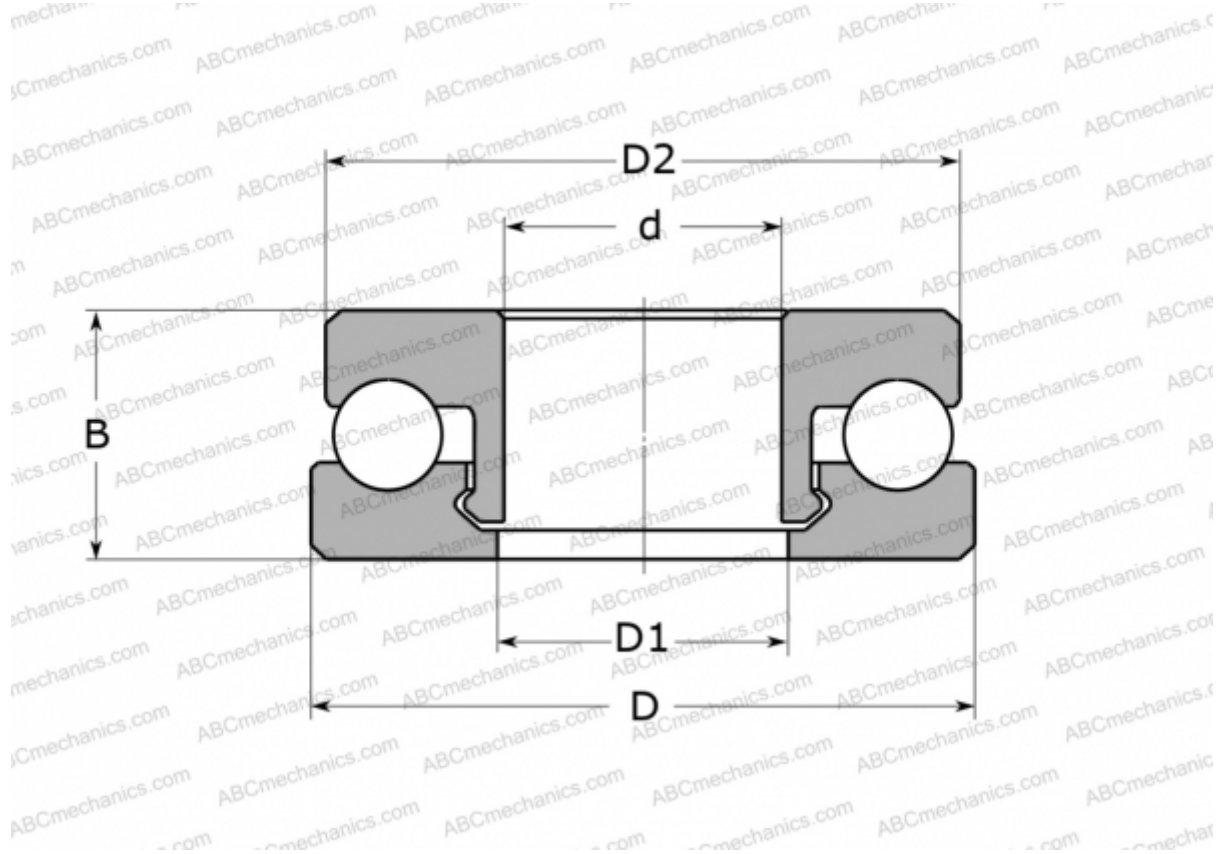


## 51207 V/HR22Q2 SKF

Thrust ball bearings

TYPE: Ball bearings, Thrust ball bearing, Single direction, Polymer, glass ball (SKF)



### Technical specification

#### DIMENSIONS, MM

d	35,000
D	62,000
D1	36,000
D2	61,000
B	18,000

**WEIGHT, KG** 43,500

**MANUFACTURER** [SKF](#)

#### CALCULATION DATA

Basic dynamic load rating, C	0,960 kN
Basic static load rating, Co	0,765 kN
Limiting speed	335 r/min