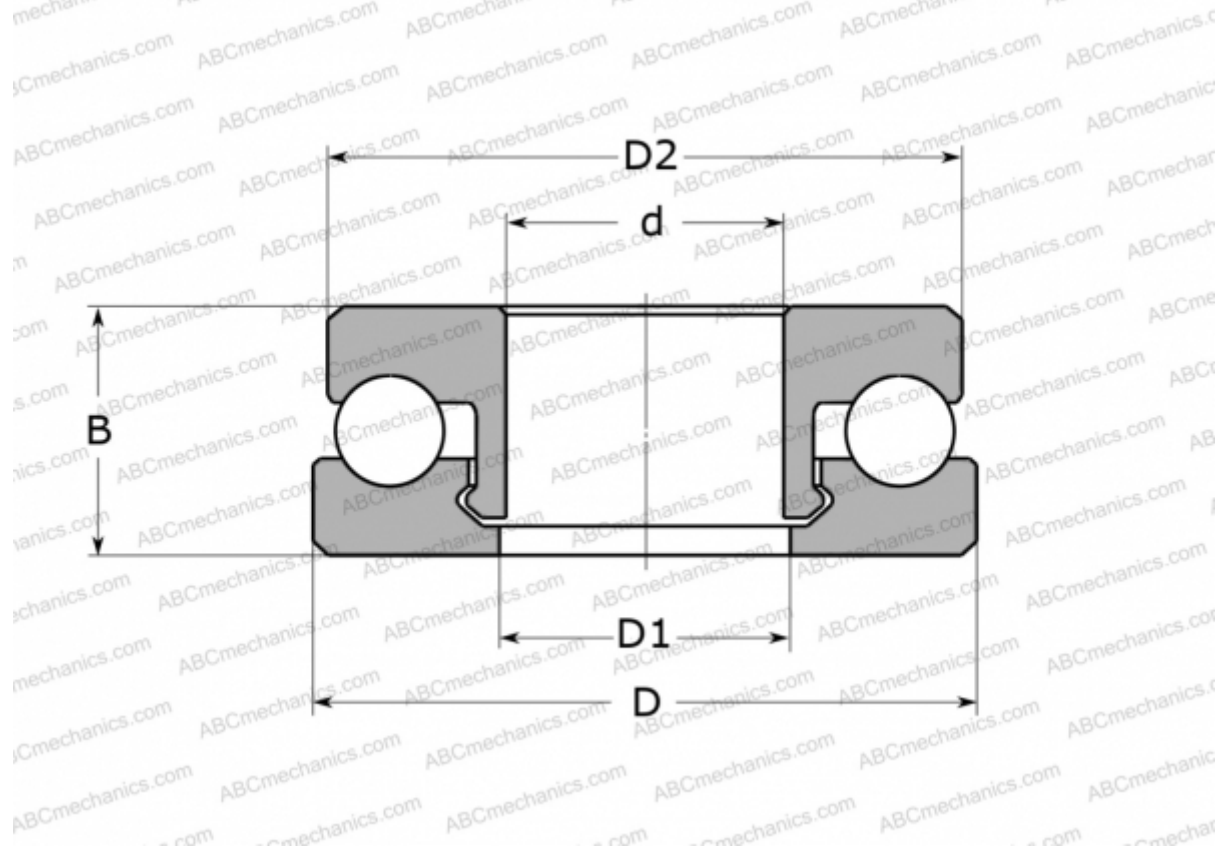


51108 V/HR11Q1 SKF

Thrust ball bearings

TYPE: Ball bearings, Thrust ball bearing, Single direction, Polymer, glass ball (SKF)



Technical specification

DIMENSIONS, MM

d	40,000
D	60,000
D1	41,000
D2	59,000
B	13,000

WEIGHT, KG 29,500

MANUFACTURER [SKF](#)

CALCULATION DATA

Basic dynamic load rating, C	1,110 kN
Basic static load rating, Co	0,890 kN
Limiting speed	375 r/min