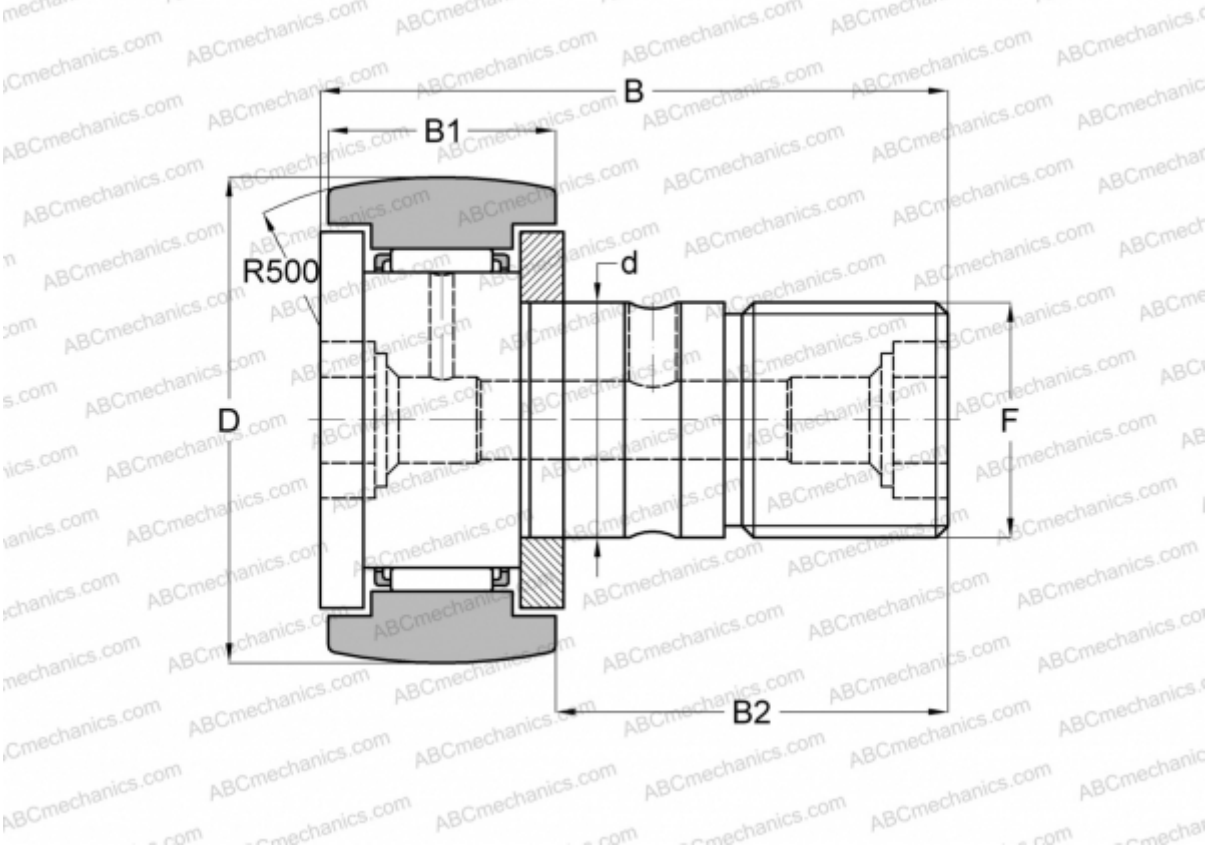




CF 10-1 RM IKO

Cam followers

TYPE: Roller bearings, Stud type track rollers, With axial guidance, gap seals on both side



Technical specification

DIMENSIONS, MM

d	10,000
D	26,000
B	36,200
B1	12,000
B2	23,000
F	M10x1

WEIGHT, KG0,060

MANUFACTURER[IKO](#)

INTERCHANGE

ABC	KR 26
INA	KR 26
SKF	KR 26 B
McGill	MCFR-26

INTERCHANGE

FAG	KR 26
-----	-----------------------

CALCULATION DATA

Basic dynamic load rating, C	5,430 kN
Basic static load rating, Co	6,890 kN

