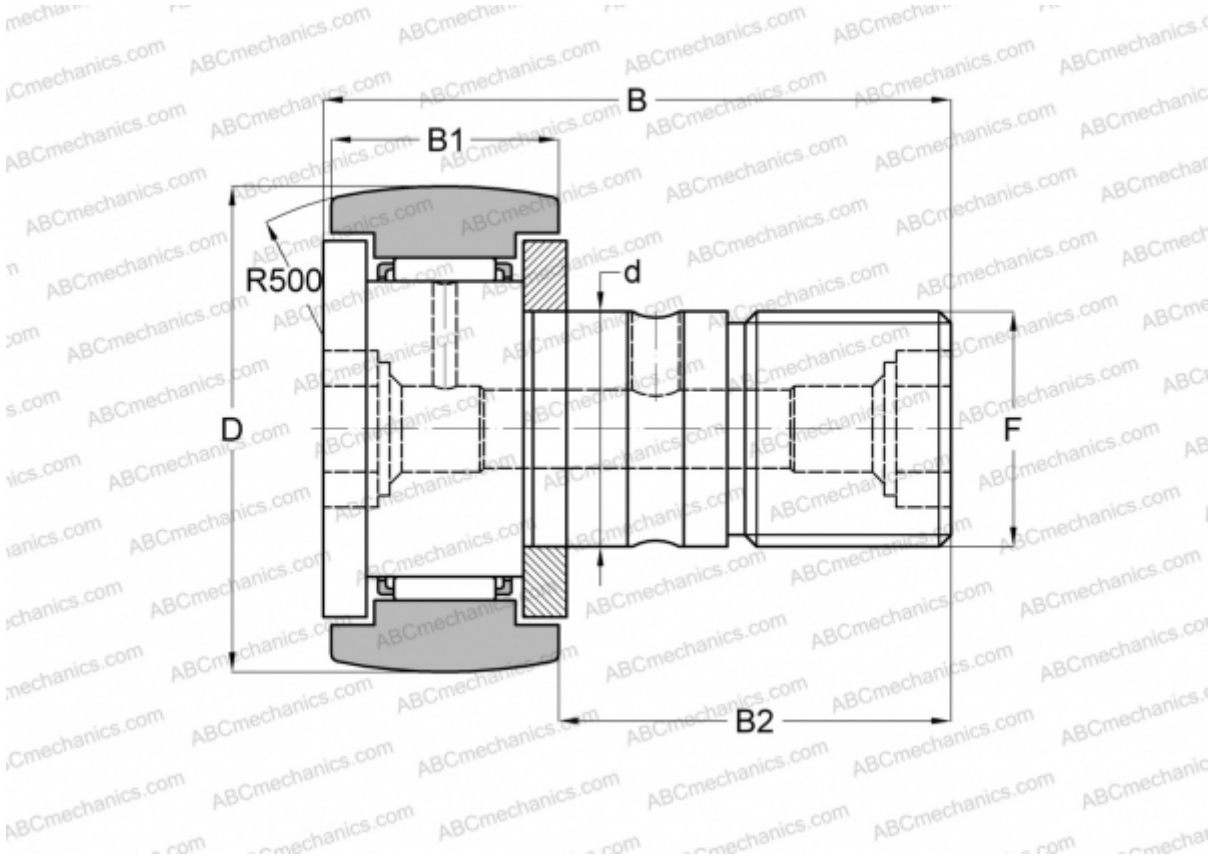




CF 10-1 R ABC

Cam followers

TYPE: Roller bearings, Stud type track rollers, With axial guidance, gap seals on both side



Technical specification

DIMENSIONS, MM	
d	10,000
D	26,000
B	36,200
B1	12,000
B2	23,000
F	M10x1.25
WEIGHT, KG	
	0,060
MANUFACTURER	
	<a href="#">ABC</a>
INTERCHANGE	
IKO	<a href="#">CF 10-1 R</a>
McGill	<a href="#">MCFR-26A</a>

