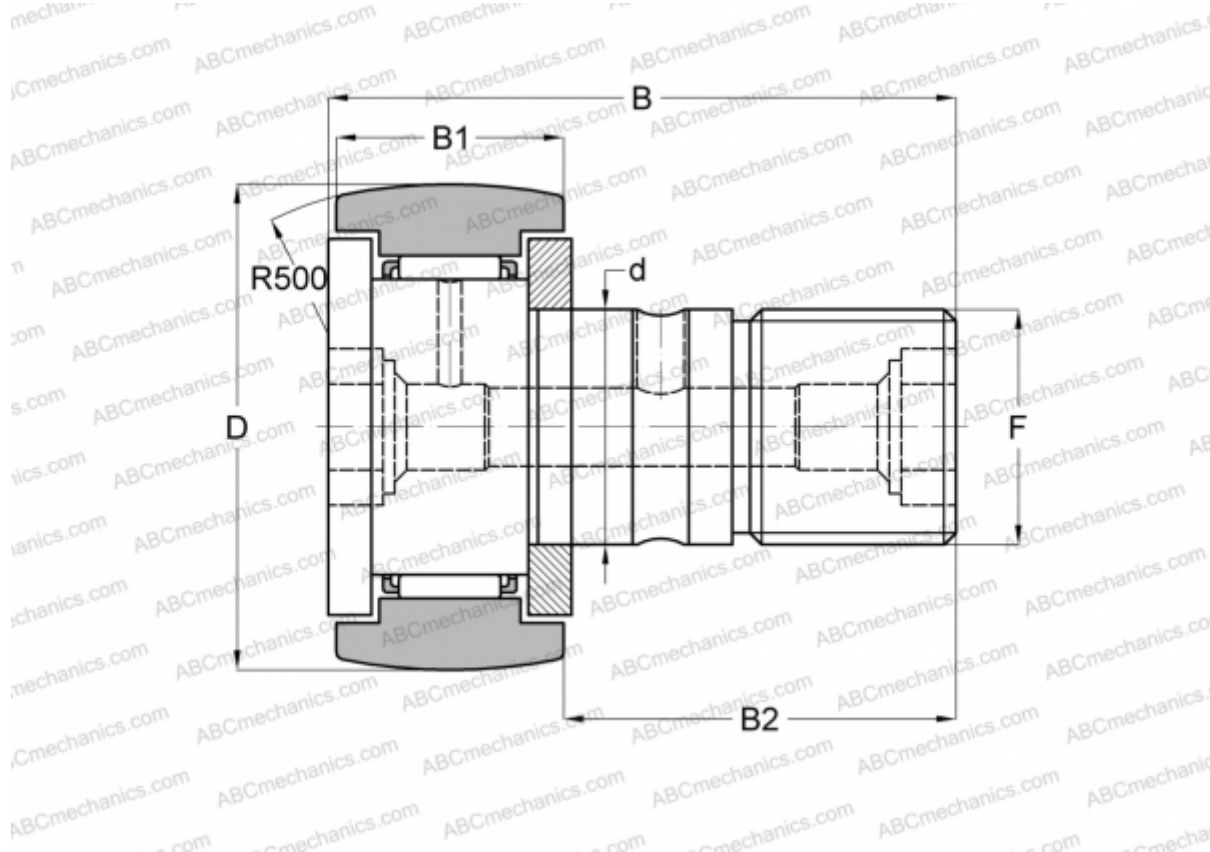




KR 32 ABC

Cam followers

TYPE: Roller bearings, Stud type track rollers, With axial guidance, gap seals on both side



Technical specification

DIMENSIONS, MM

| | |
|----|---------|
| d | 12,000 |
| D | 32,000 |
| B | 40,000 |
| B1 | 14,000 |
| B2 | 25,000 |
| F | M12x1.5 |

WEIGHT, KG 0,100

MANUFACTURER [ABC](#)

INTERCHANGE

| | |
|--------|---------------------------|
| INA | KR 32 |
| SKF | KR 32 B |
| IKO | CF 12-1 R |
| McGill | MCFR-32 |

INTERCHANGE

| | |
|-----|-----------------------|
| FAG | KR 32 |
|-----|-----------------------|

