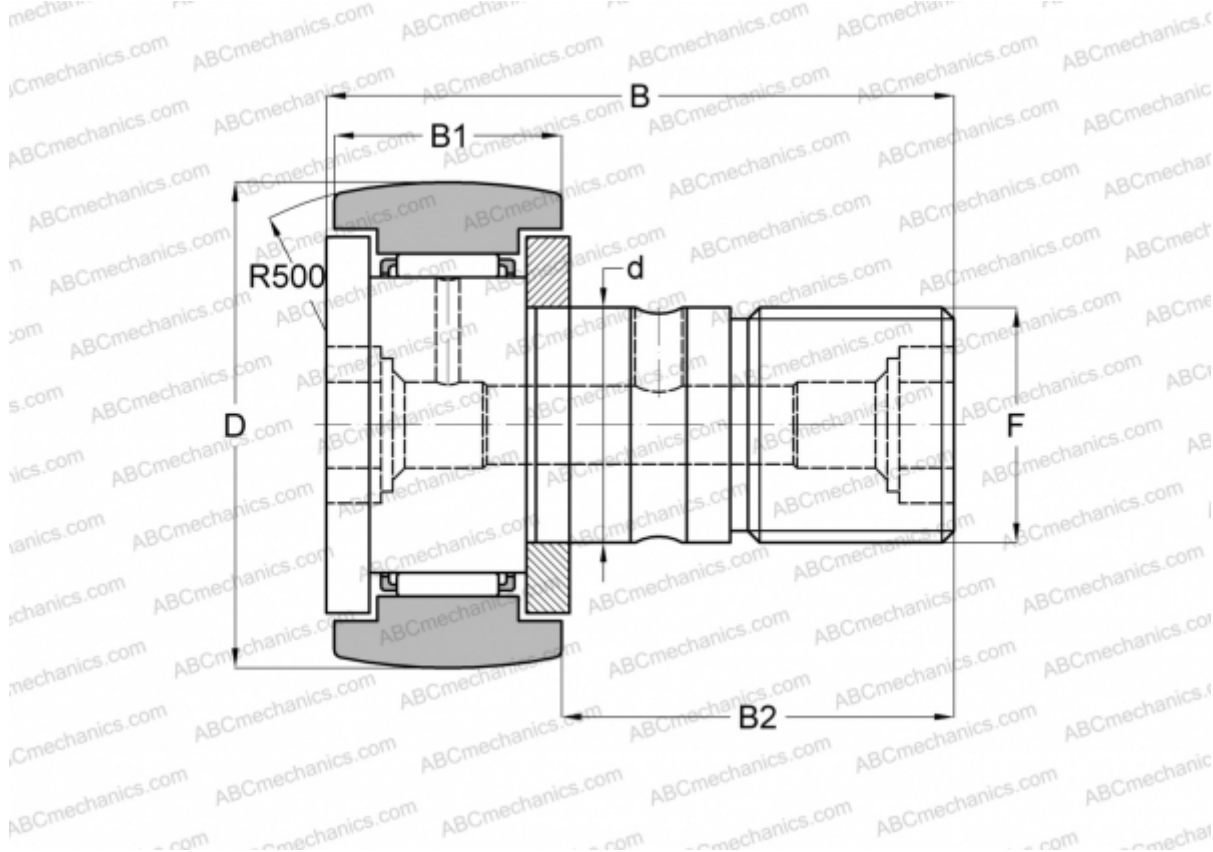




## KR 32 FAG

Cam followers

TYPE: Roller bearings, Stud type track rollers, With axial guidance, gap seals on both side



### Technical specification

#### DIMENSIONS, MM

d	12,000
D	32,000
B	40,000
B1	14,000
B2	25,000
F	M12x1.5

**WEIGHT, KG** 0,100

**MANUFACTURER** [FAG](#)

#### INTERCHANGE

ABC	<a href="#">KR 32</a>
INA	<a href="#">KR 32</a>
SKF	<a href="#">KR 32 B</a>
IKO	<a href="#">CF 12-1 R</a>

#### INTERCHANGE

McGill	<a href="#">MCFR-32</a>
--------	-------------------------

