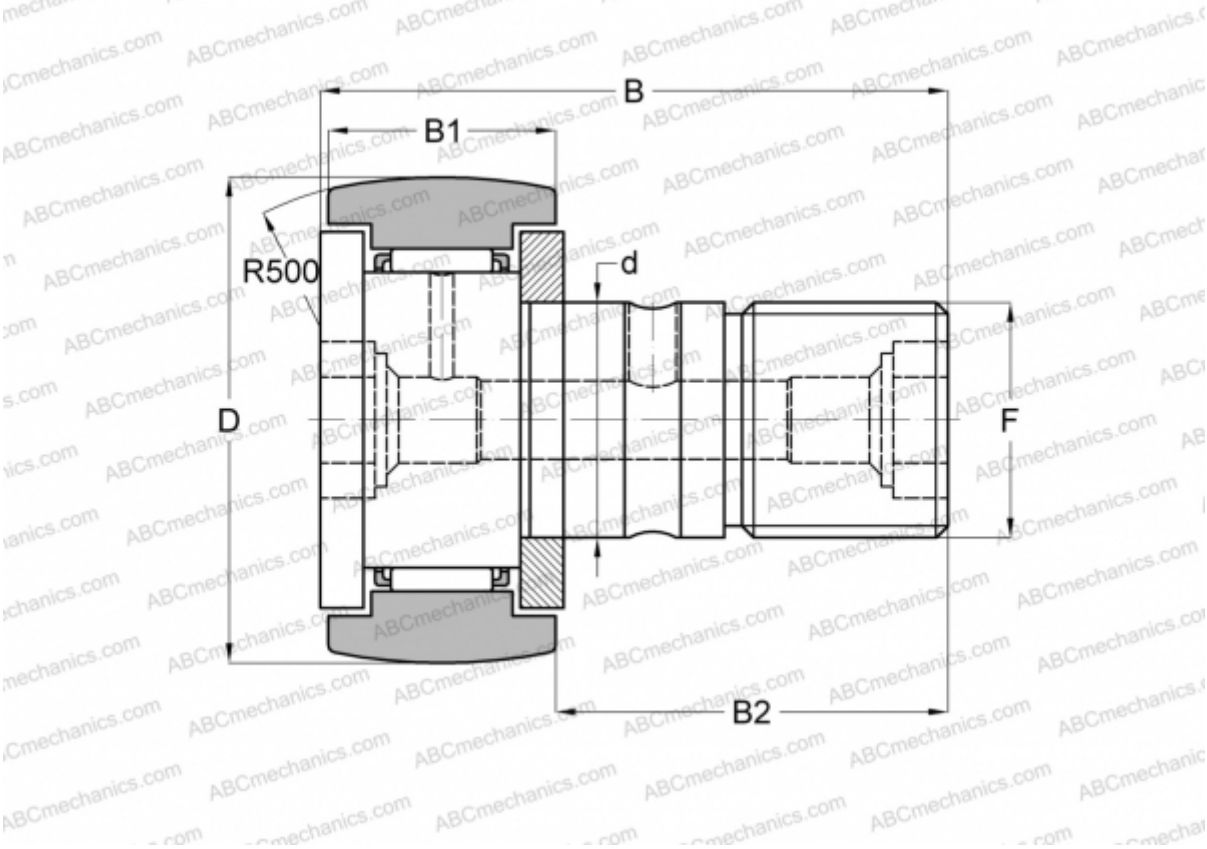




CF 20 R IKO

Cam followers

TYPE: Roller bearings, Stud type track rollers, With axial guidance, gap seals on both side



Technical specification

DIMENSIONS, MM

d	20,000
D	52,000
B	66,100
B1	24,000
B2	40,500
F	M20x1.5

WEIGHT, KG 0,460

MANUFACTURER [IKO](#)

INTERCHANGE

ABC	<a href="#">KR 52</a>
INA	<a href="#">KR 52</a>
SKF	<a href="#">KR 52</a>
McGill	<a href="#">MCFR-52</a>

CALCULATION DATA

Basic dynamic load rating, C	20,700 kN
Basic static load rating, Co	34,600 kN

