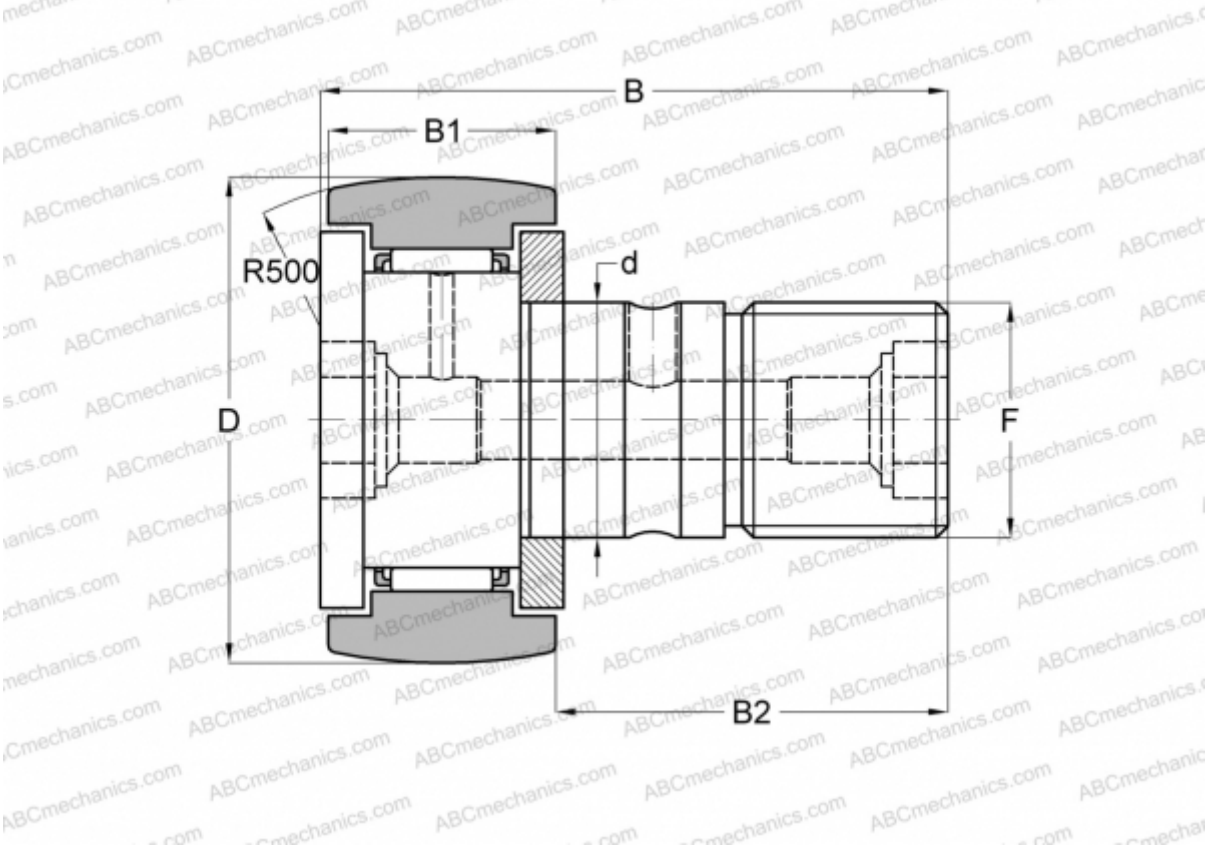




CF 24 R IKO

Cam followers

TYPE: Roller bearings, Stud type track rollers, With axial guidance, gap seals on both side



Technical specification

DIMENSIONS, MM

d	24,000
D	62,000
B	80,100
B1	29,000
B2	49,500
F	M24x1.5

WEIGHT, KG0,815

MANUFACTURER[IKO](#)

INTERCHANGE

ABC	KR 62
INA	KR 62
SKF	KR 62
McGill	MCFR-62

CALCULATION DATA

Basic dynamic load rating, C	30,500 kN
Basic static load rating, Co	52,600 kN

