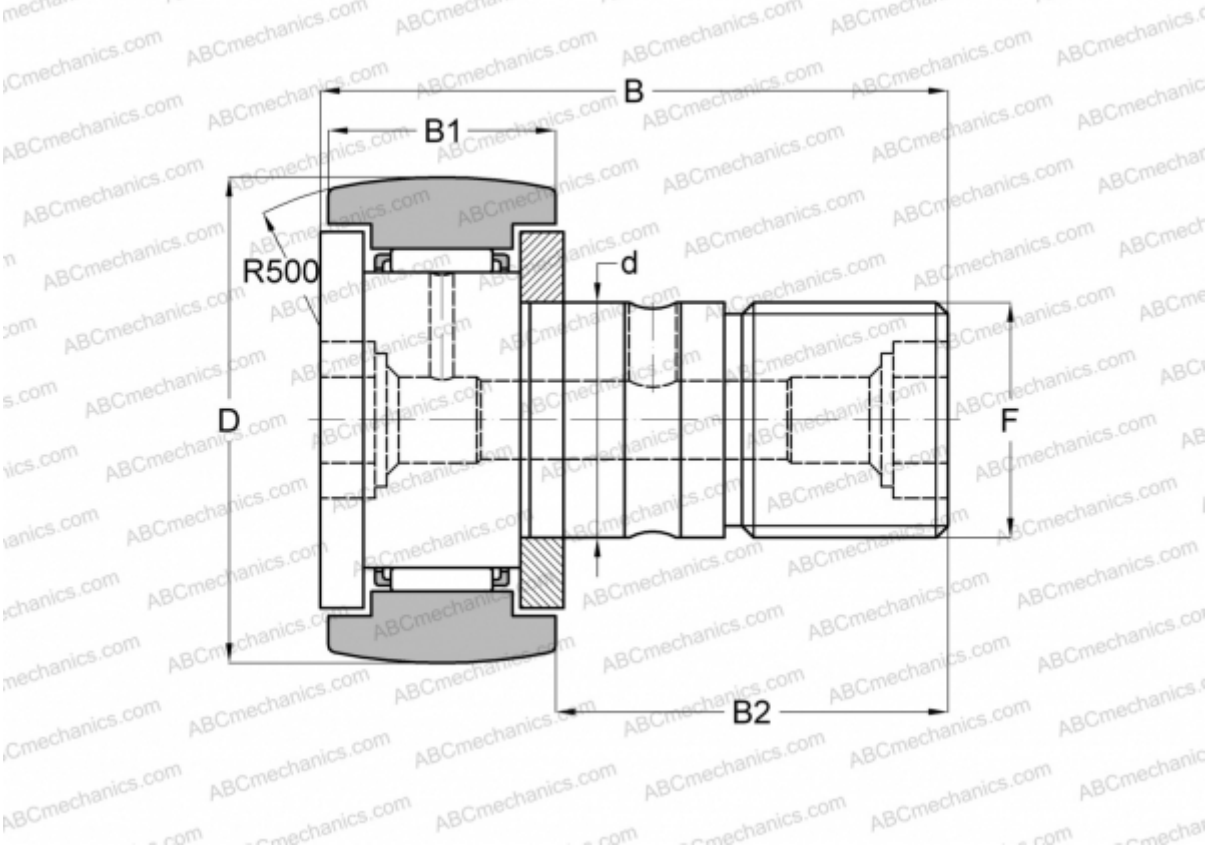




CF 24-1 R IKO

Cam followers

TYPE: Roller bearings, Stud type track rollers, With axial guidance, gap seals on both side



Technical specification

DIMENSIONS, MM

| | |
|----|---------|
| d | 24,000 |
| D | 72,000 |
| B | 80,100 |
| B1 | 29,000 |
| B2 | 49,500 |
| F | M24x1.5 |

WEIGHT, KG1,140

MANUFACTURER[IKO](#)

INTERCHANGE

| | |
|--------|-------------------------|
| ABC | KR 72 |
| INA | KR 72 |
| SKF | KR 72 |
| McGill | MCFR-72 |

CALCULATION DATA

| | |
|------------------------------|-----------|
| Basic dynamic load rating, C | 30,500 kN |
| Basic static load rating, Co | 52,600 kN |

