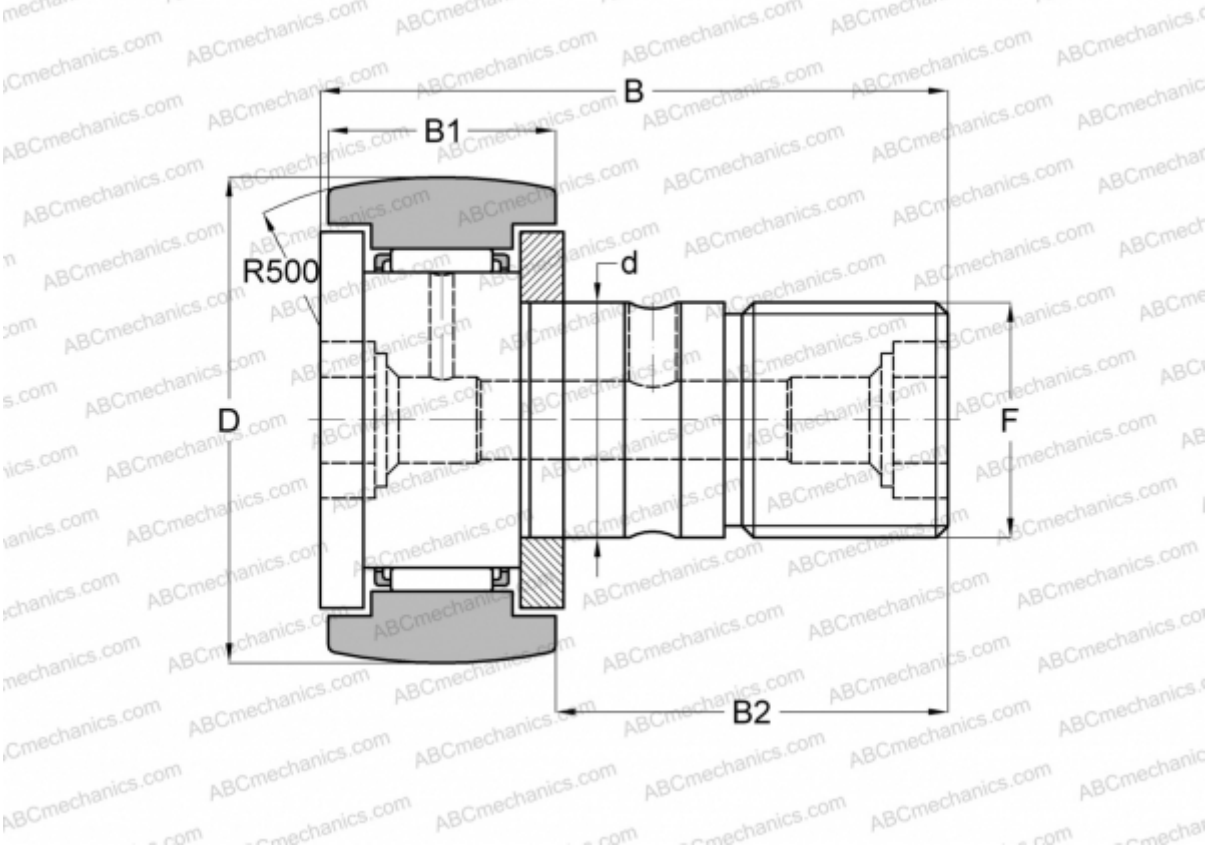




## KR 90 ABC

Cam followers

TYPE: Roller bearings, Stud type track rollers, With axial guidance, gap seals on both side



### Technical specification

**DIMENSIONS, MM**

|    |         |
|----|---------|
| d  | 30,000  |
| D  | 90,000  |
| B  | 100,000 |
| B1 | 35,000  |
| B2 | 63,000  |
| F  | M30x1.5 |

**WEIGHT, KG** 2,032

**MANUFACTURER** [ABC](#)

**INTERCHANGE**

|        |                           |
|--------|---------------------------|
| INA    | <a href="#">KR 90</a>     |
| SKF    | <a href="#">KR 90</a>     |
| IKO    | <a href="#">CF 30-2 R</a> |
| McGill | <a href="#">MCFR-90</a>   |

