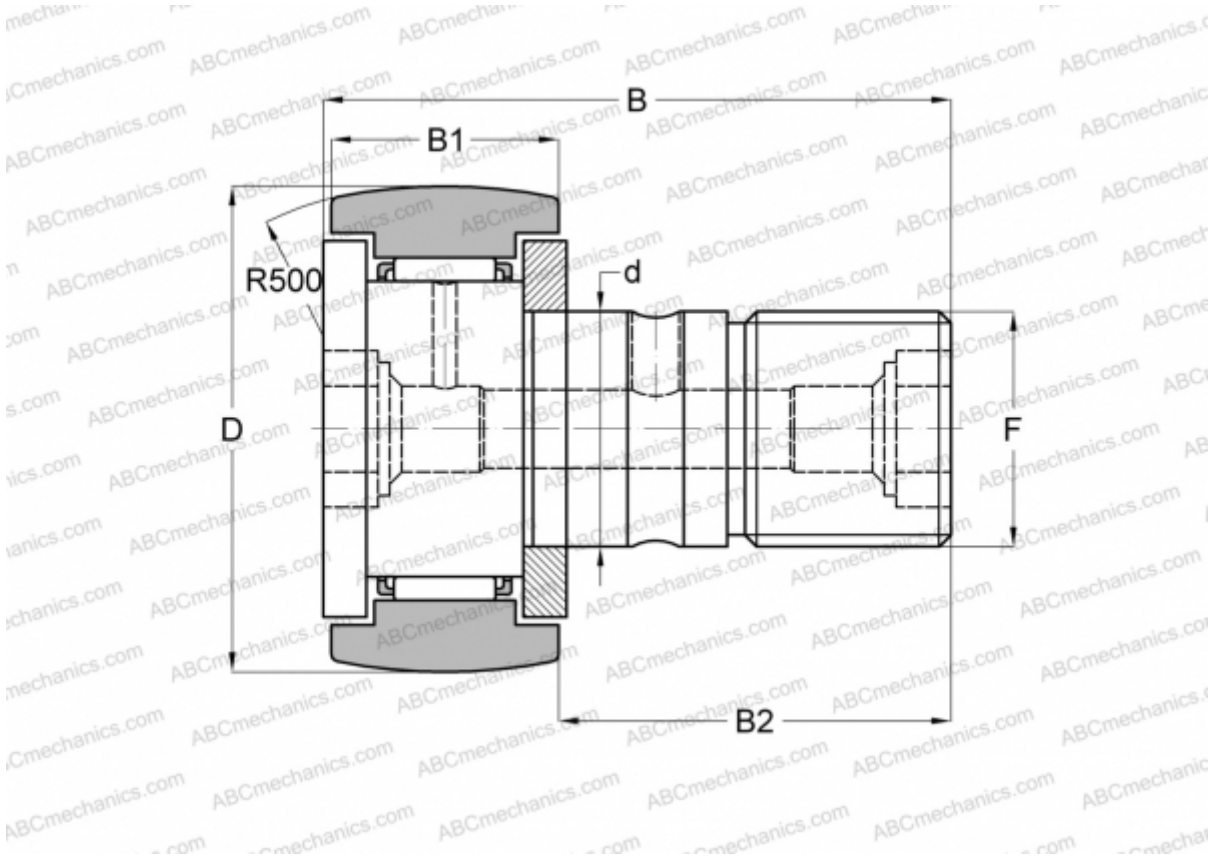




CF 30-1 R ABC

Cam followers

TYPE: Roller bearings, Stud type track rollers, With axial guidance, gap seals on both side



Technical specification

DIMENSIONS, MM	
d	30,000
D	85,000
B	100,000
B1	35,000
B2	63,000
F	M30x1.5
WEIGHT, KG	
2,030	
MANUFACTURER	
ABC	
INTERCHANGE	
IKO	CF 30-1 R
McGill	MCFR-85

