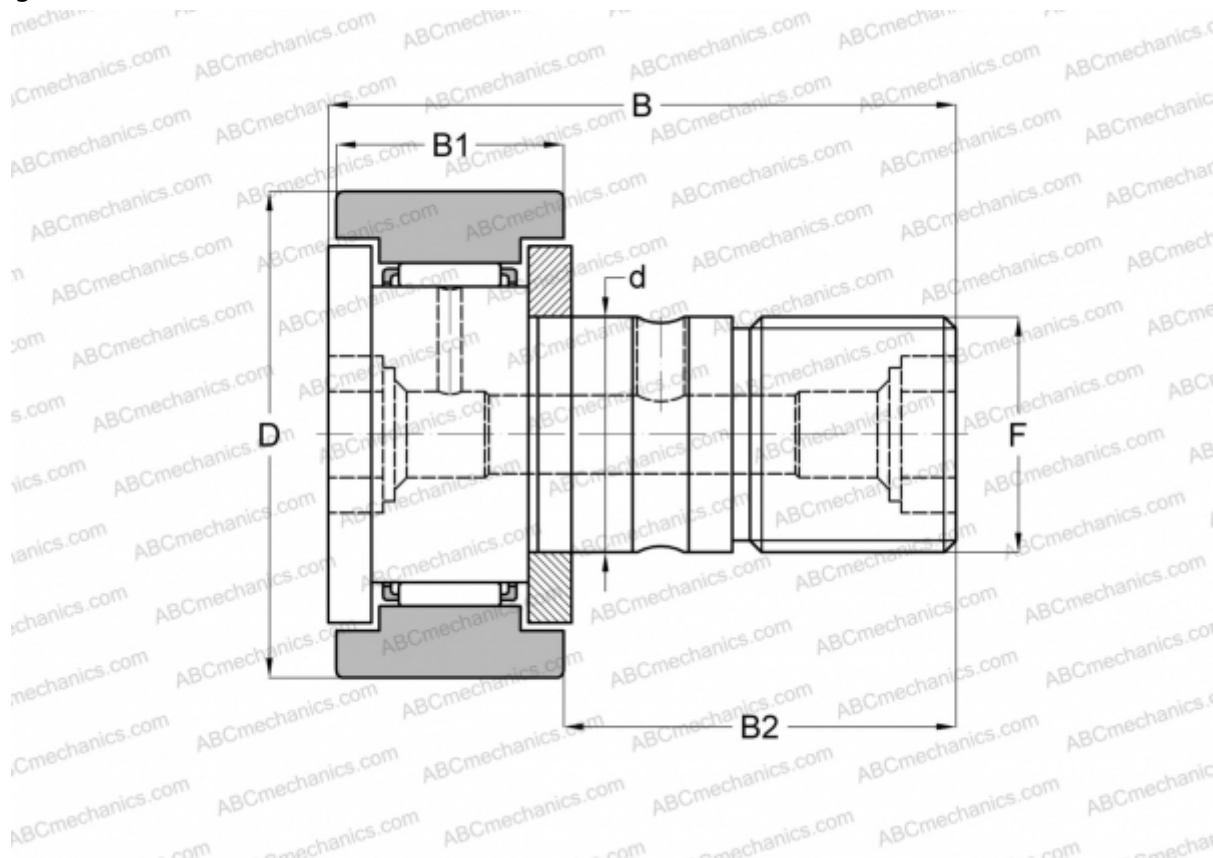




## CF 3 ABC

Cam followers

TYPE: Roller bearings, Stud type track rollers, With axial guidance, gap seals on both side, cylindrical outer ring



### Technical specification

#### DIMENSIONS, MM

d	3,000
D	10,000
B	17,000
B1	7,000
B2	9,000
F	M3x0.5

**WEIGHT, KG** 0,004

**MANUFACTURER** [ABC](#)

#### INTERCHANGE

IKO	<a href="#">CF 3</a>
McGill	<a href="#">MCFR-10-X</a>

