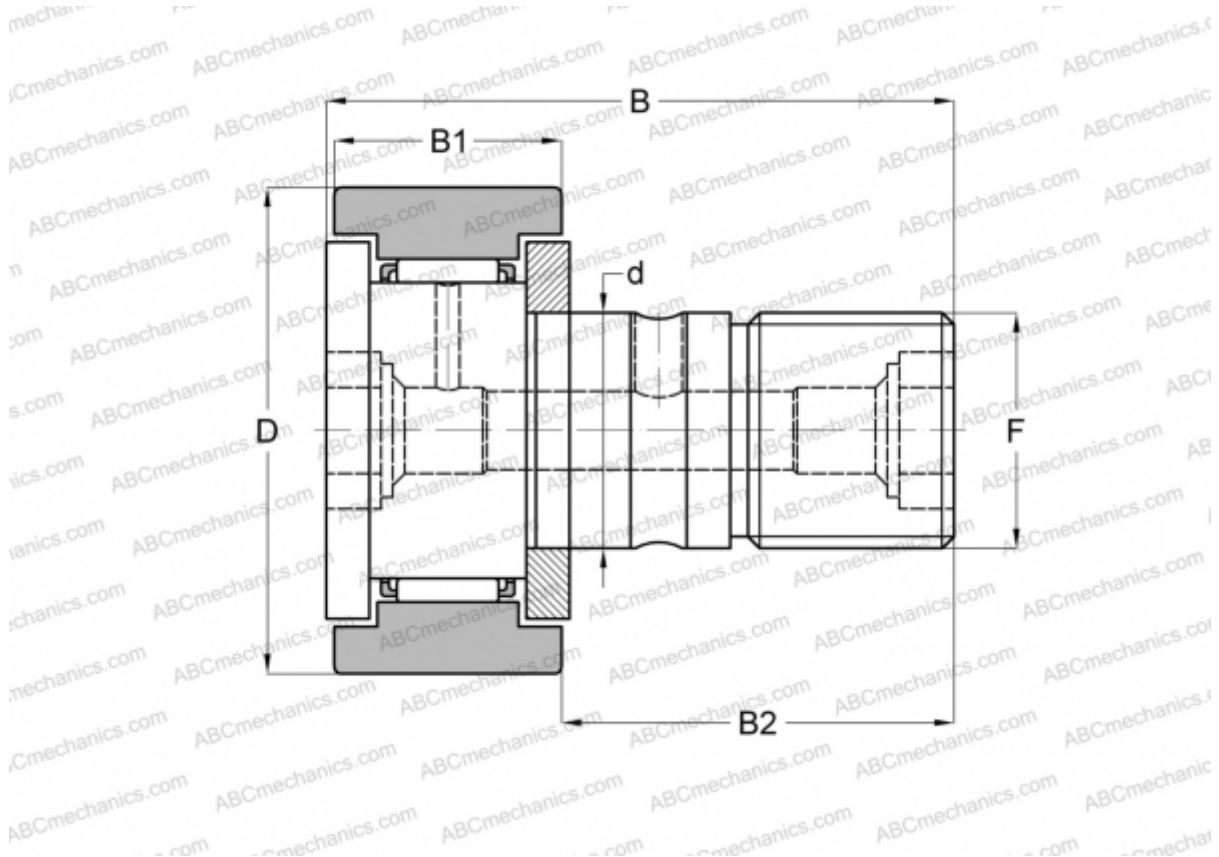


CF 3 IKO

Cam followers

TYPE: Roller bearings, Stud type track rollers, With axial guidance, gap seals on both side, cylindrical outer ring



Technical specification

DIMENSIONS, MM

d	3,000
D	10,000
B	17,000
B1	7,000
B2	9,000
F	M3x0.5

WEIGHT, KG 0,004

MANUFACTURER [IKO](#)

INTERCHANGE

ABC	CF 3
McGill	MCFR-10-X

CALCULATION DATA

Basic dynamic load rating, C	1,500 kN
------------------------------	----------

CALCULATION DATA

Basic static load rating, Co	1,020 kN
------------------------------	----------