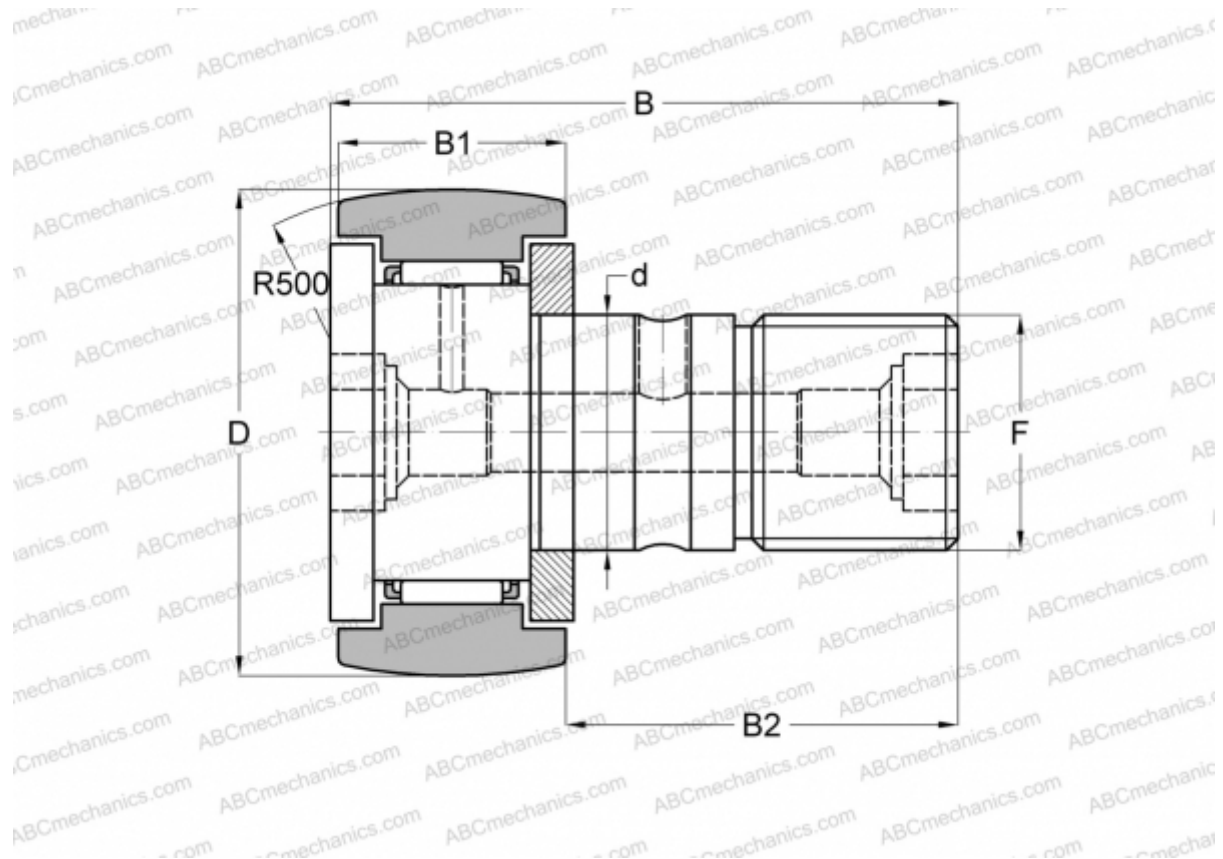


CF 18 R-AB JNS

Cam followers

TYPE: Roller bearings, Stud type track rollers, With axial guidance, gap seals on both side, double hex hole



Technical specification

DIMENSIONS, MM

d	18,000
D	40,000
B	58,000
B1	20,000
B2	36,500
F	M18x1,5

WEIGHT, KG 0,255

MANUFACTURER [JNS](#)

INTERCHANGE

ABC	CFKR 40
IKO	CFKR 40
THK	CF 18 R-AB