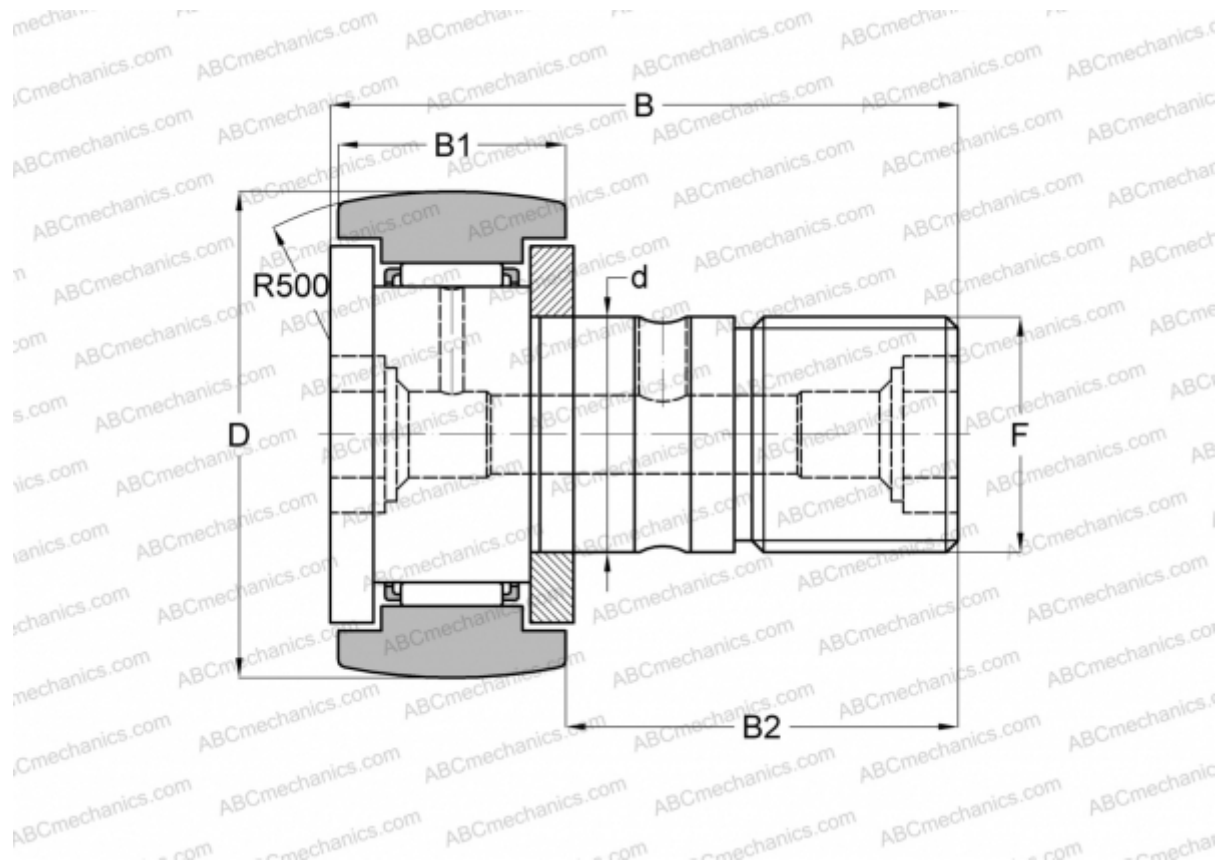


CF 24 R-AB THK

Cam followers

TYPE: Roller bearings, Stud type track rollers, With axial guidance, gap seals on both side, double hex hole



Technical specification

DIMENSIONS, MM

d	24,000
D	62,000
B	80,000
B1	29,000
B2	49,500
F	M24x1,5

WEIGHT, KG 0,798

MANUFACTURER [THK](#)

INTERCHANGE

ABC	CFKR 62
IKO	CFKR 62
JNS	CF 24 R-AB