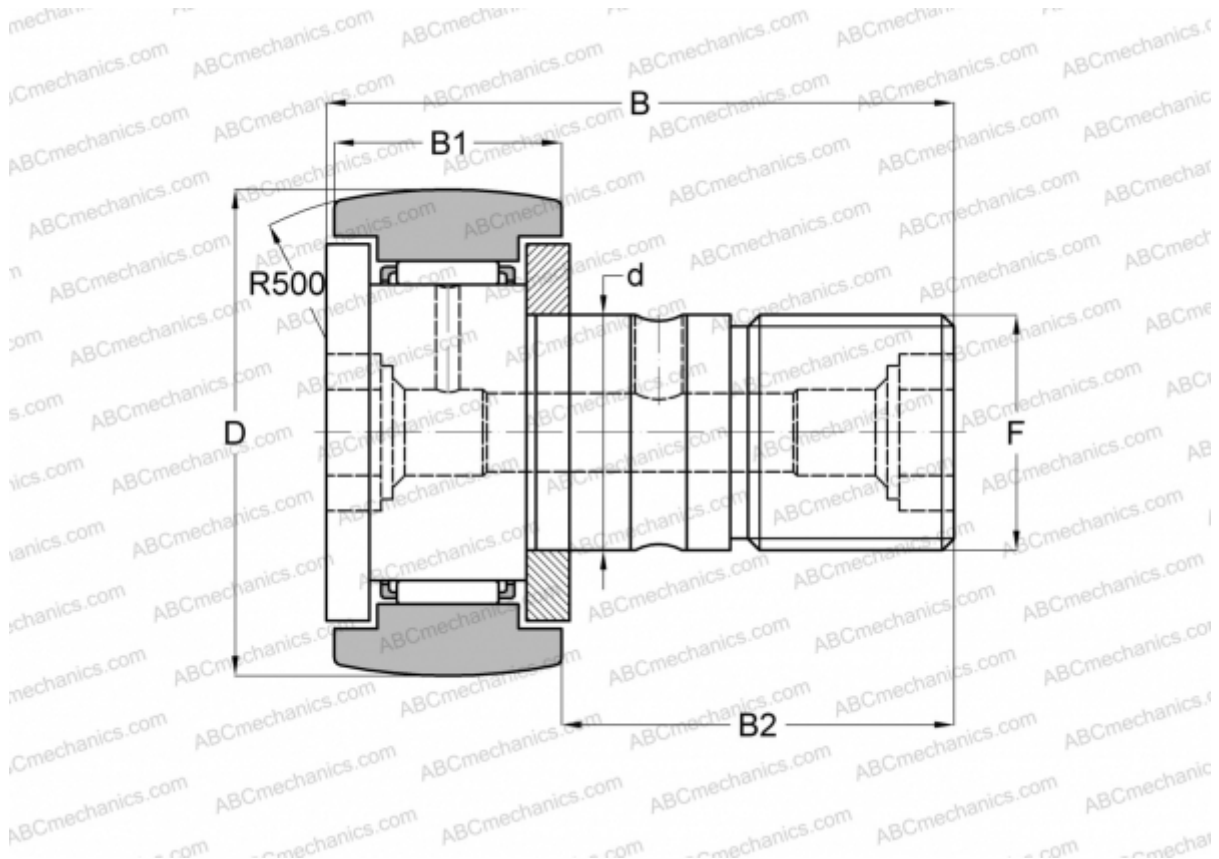


CFKR 72 IKO

Cam followers

TYPE: Roller bearings, Stud type track rollers, With axial guidance, gap seals on both side, double hex hole



Technical specification

DIMENSIONS, MM

d	24,000
D	72,000
B	80,100
B1	29,000
B2	49,500
F	M24x1.5

WEIGHT, KG 1,120

MANUFACTURER [IKO](#)

INTERCHANGE

ABC	CFKR 72
JNS	CF 24-1 R-AB
THK	CF 24-1 R-AB

CALCULATION DATA

Basic dynamic load rating, C	30,500 kN
Basic static load rating, Co	52,600 kN