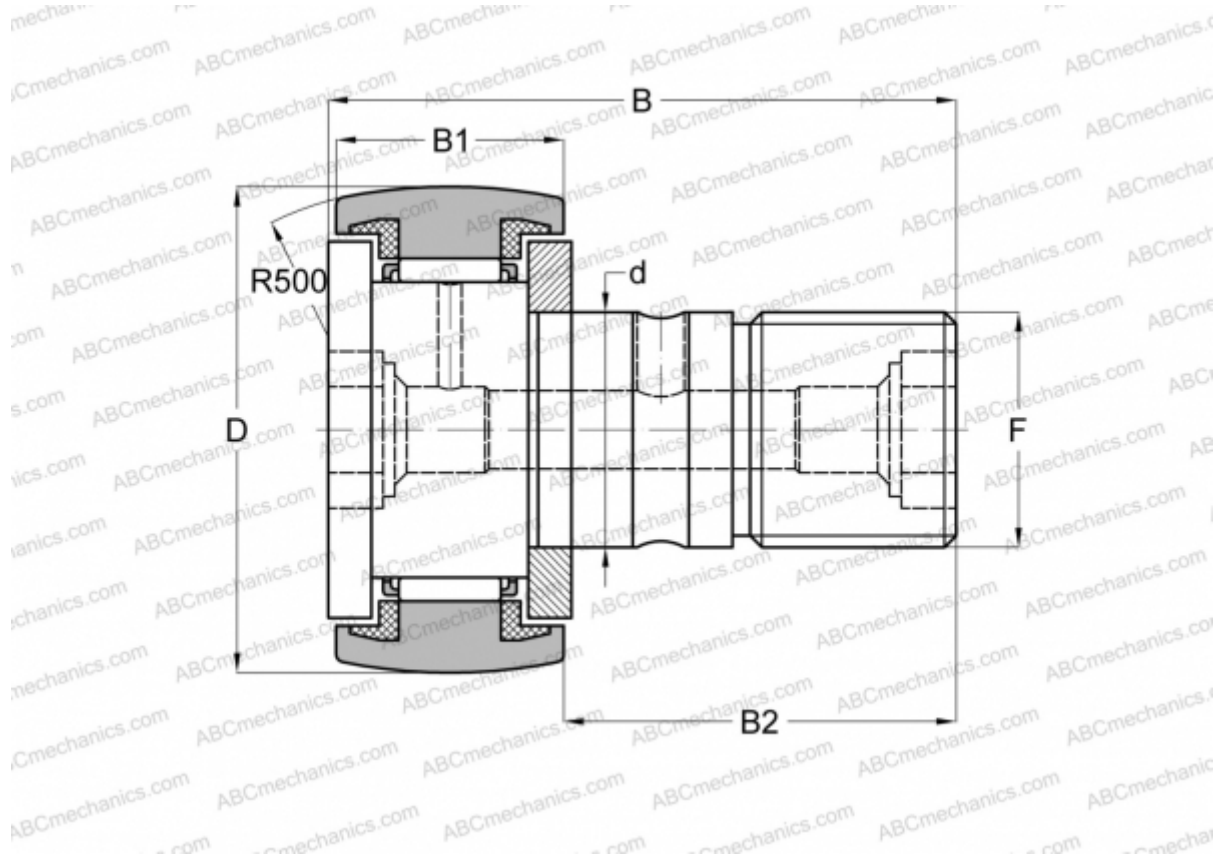




KR 19 C2RS/ NAKD 19 FAG

Cam followers

TYPE: Roller bearings, Stud type track rollers, With axial guidance, sealing rings on both sides



Technical specification

DIMENSIONS, MM

d	8,000
D	19,000
B	32,000
B1	11,000
B2	20,000
F	M8x1.25

WEIGHT, KG 0,032

MANUFACTURER [FAG](#)

INTERCHANGE

ABC	KR 19 PP
INA	KR 19 PP
SKF	KR 19 PPA
IKO	CF 8 UUR

INTERCHANGE

McGill	MCFR-19-S
--------	---------------------------

