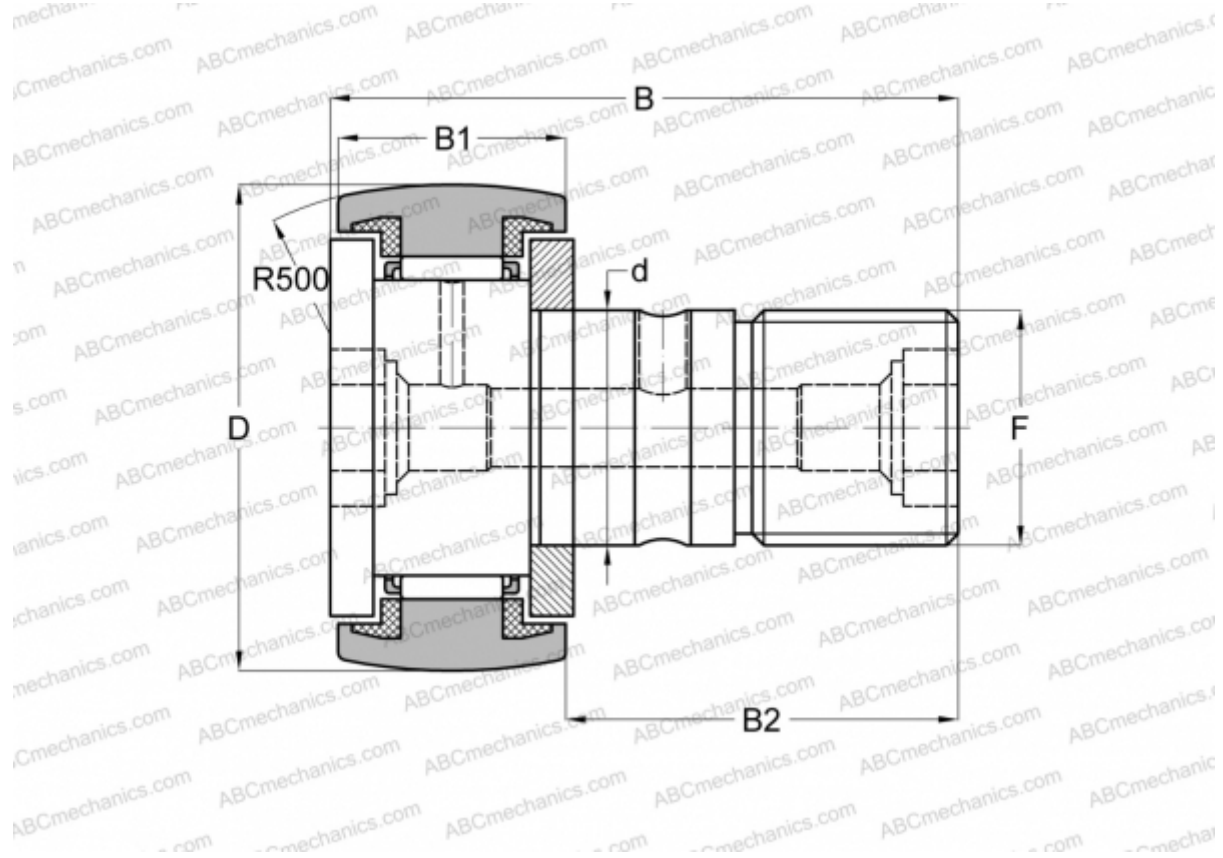


## KR 35 PPA SKF

Cam followers

TYPE: Roller bearings, Stud type track rollers, With axial guidance, sealing rings on both sides



### Technical specification

#### DIMENSIONS, MM

d	16,000
D	35,000
B	52,000
B1	18,000
B2	32,500
F	M 16x1.5

**WEIGHT, KG** 0,164

**MANUFACTURER** [SKF](#)

#### INTERCHANGE

ABC	<a href="#">KR 35 PP</a>
INA	<a href="#">KR 35 PP</a>
IKO	<a href="#">CF 16 UUR</a>
McGill	<a href="#">MCFR-35-S</a>

#### CALCULATION DATA

Basic dynamic load rating, C	9,520 kN
Basic static load rating, Co	13,700 kN
Fatigue load limit, Pu	1,560 kN
Limiting speed	4000 r/min