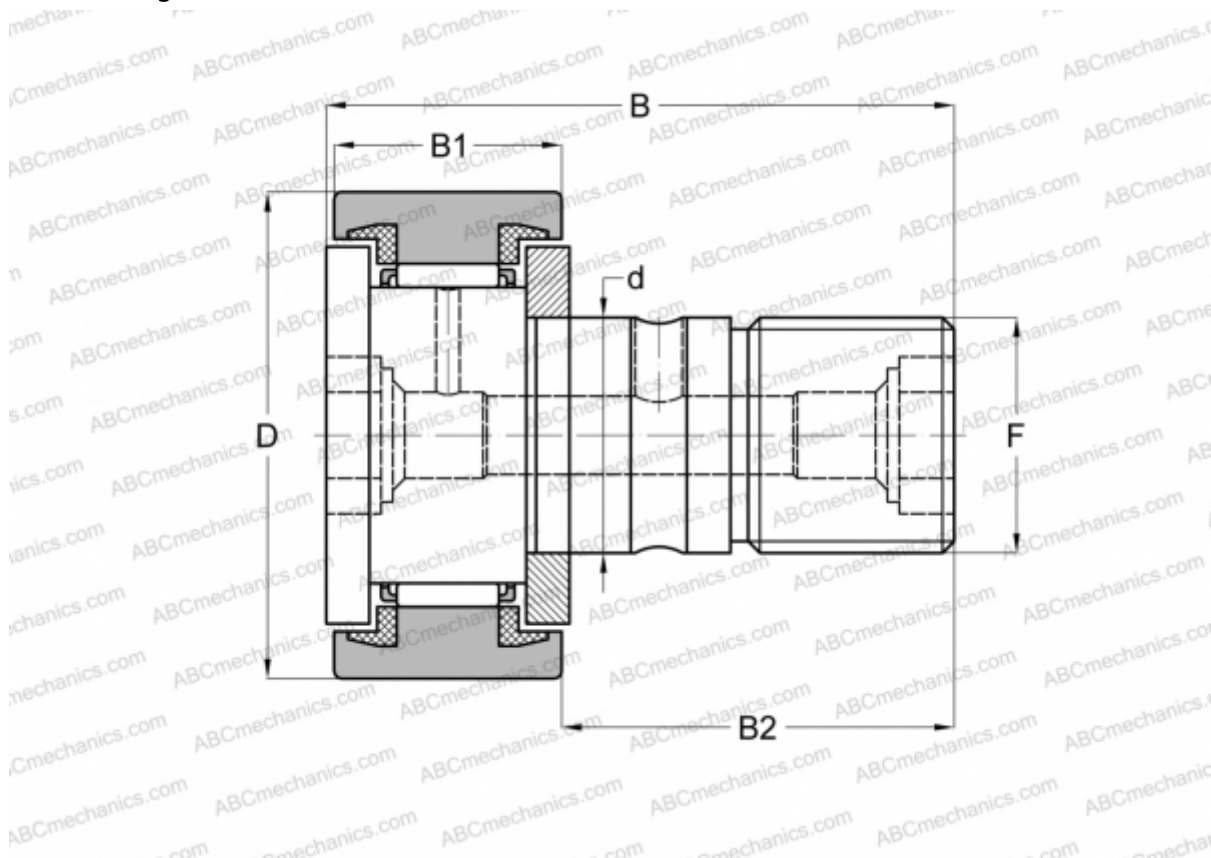


## CF 8 UU IKO

Cam followers

TYPE: Roller bearings, Stud type track rollers, With axial guidance, sealing rings on both sides, cylindrical outer ring



### Technical specification

#### DIMENSIONS, MM

d	8,000
D	19,000
B	32,200
B1	11,000
B2	20,000
F	M8x1.25

**WEIGHT, KG** 0,029

**MANUFACTURER** [IKO](#)

#### INTERCHANGE

ABC	<a href="#">KR 19 PPX</a>
FAG	<a href="#">KR 19C DZ 2RS/ NAKD 19 DZ</a>
INA	<a href="#">KR 19 PPX</a>
SKF	<a href="#">KR 19 PPX</a>

#### INTERCHANGE

McGill [MCFR-19-SX](#)

#### CALCULATION DATA

Basic dynamic load rating, C	4,250 kN
Basic static load rating, Co	4,740 kN