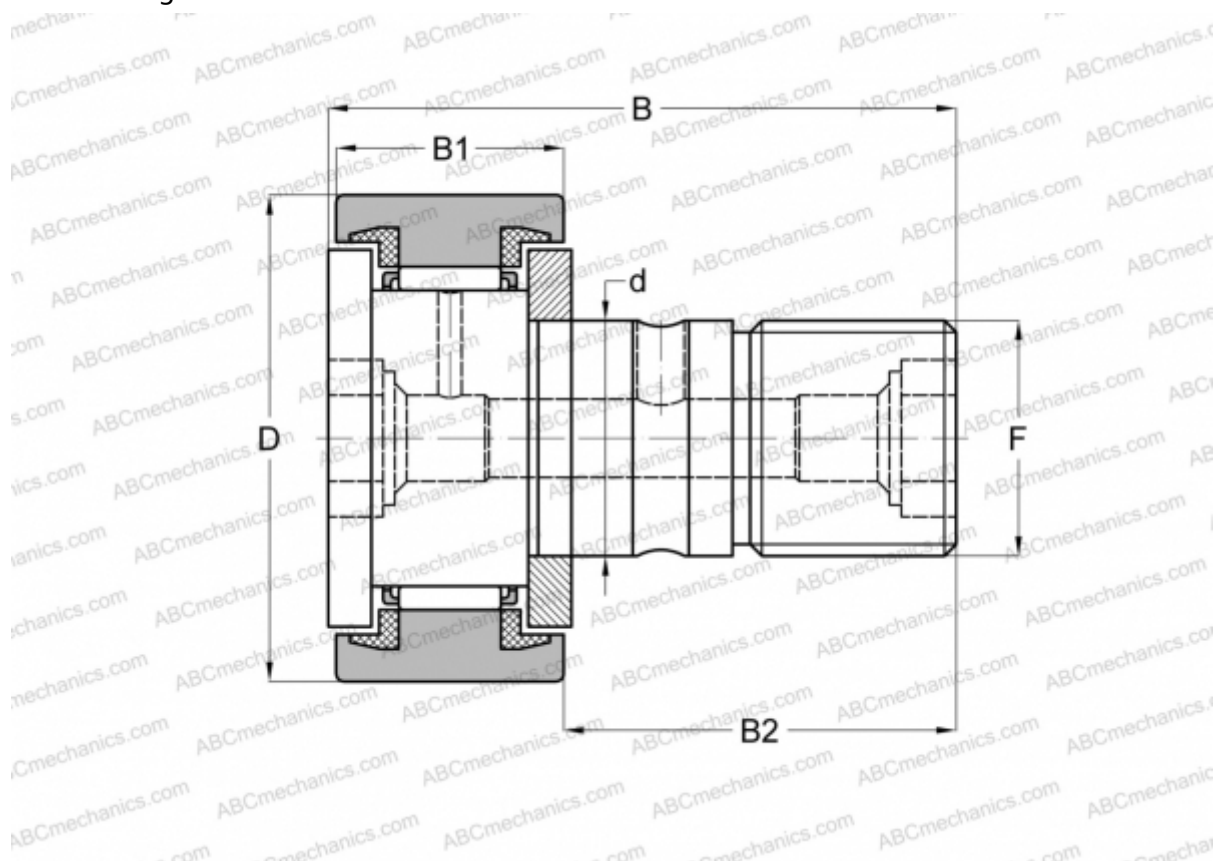


## CF 10 UUM IKO

Cam followers

TYPE: Roller bearings, Stud type track rollers, With axial guidance, sealing rings on both sides, cylindrical outer ring



### Technical specification

#### DIMENSIONS, MM

d	10,000
D	22,000
B	36,200
B1	12,000
B2	23,000
F	M10x1

**WEIGHT, KG** 0,045

**MANUFACTURER** [IKO](#)

#### INTERCHANGE

ABC	<a href="#">KR 22 PPX</a>
FAG	<a href="#">KR 22C DZ 2RS/ NAKD 22 DZ</a>
INA	<a href="#">KR 22 PPX</a>
SKF	<a href="#">KR 22 PPX</a>

#### INTERCHANGE

McGill [MCFR-22-SX](#)

#### CALCULATION DATA

Basic dynamic load rating, C	5,430 kN
Basic static load rating, Co	6,890 kN