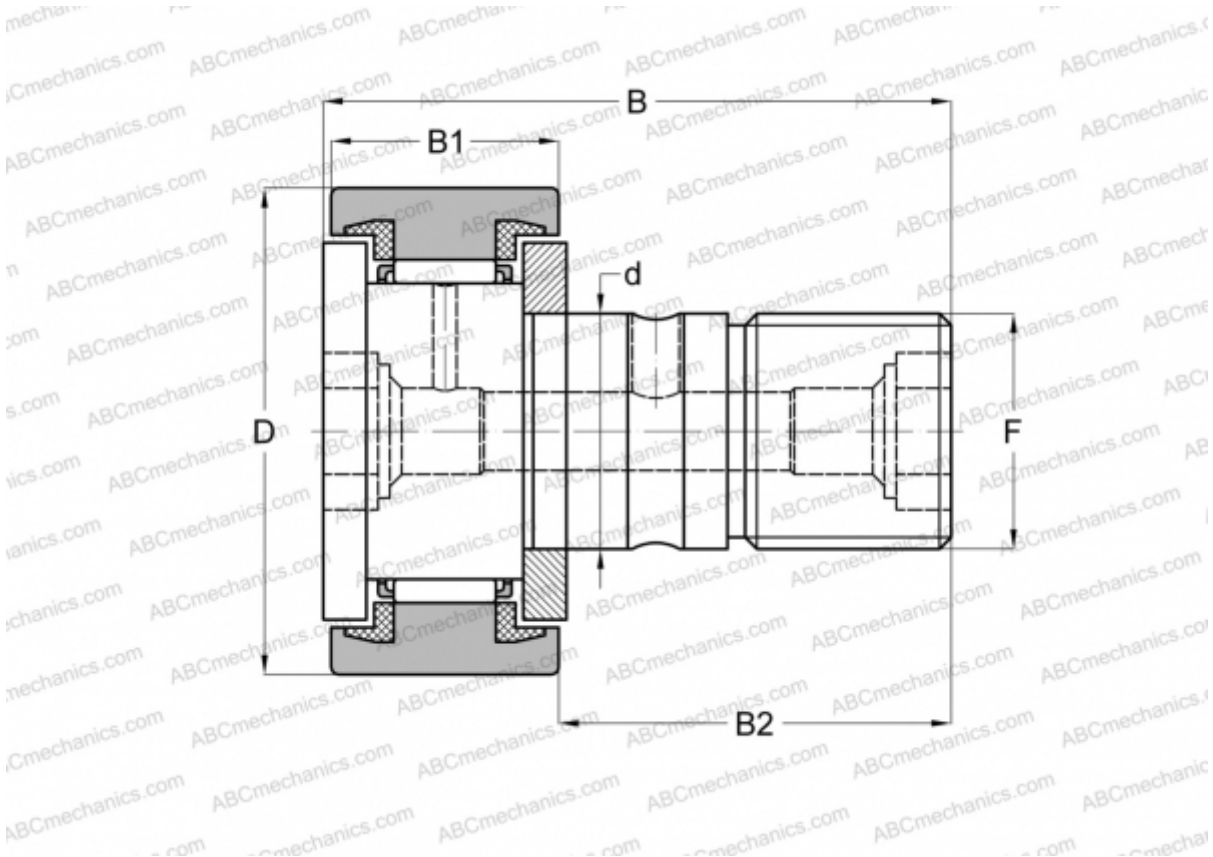




CF 10-1 UU ABC

Cam followers

TYPE: Roller bearings, Stud type track rollers, With axial guidance, sealing rings on both sides, cylindrical outer ring



Technical specification

DIMENSIONS, MM	
d	10,000
D	26,000
B	36,200
B1	12,000
B2	23,000
F	M10x1.25
WEIGHT, KG	
0,060	
MANUFACTURER	
ABC	
INTERCHANGE	
IKO	CF 10-1 UU
McGill	MCFR-26A-SX

