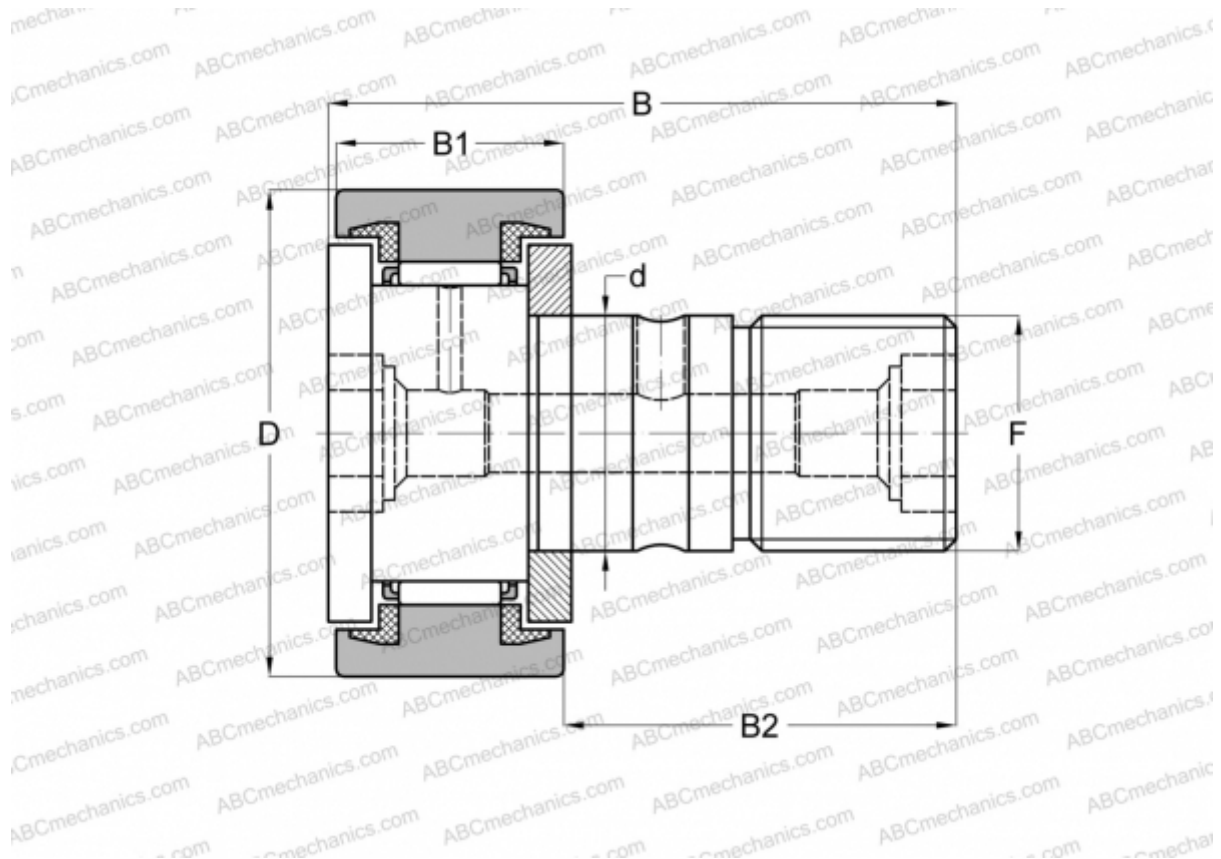


CFKR 40 UU ABC

Cam followers

TYPE: Roller bearings, Stud type track rollers, With axial guidance, sealing rings on both sides, cylindrical outer ring, double hex hole



Technical specification

DIMENSIONS, MM

d	18,000
D	40,000
B	58,000
B1	20,000
B2	36,500
F	M18x1.5

WEIGHT, KG 0,255

MANUFACTURER [ABC](#)

INTERCHANGE

IKO	CFKR 40 UU
JNS	CF 18 UU-AB
THK	CF 18 UU-AB