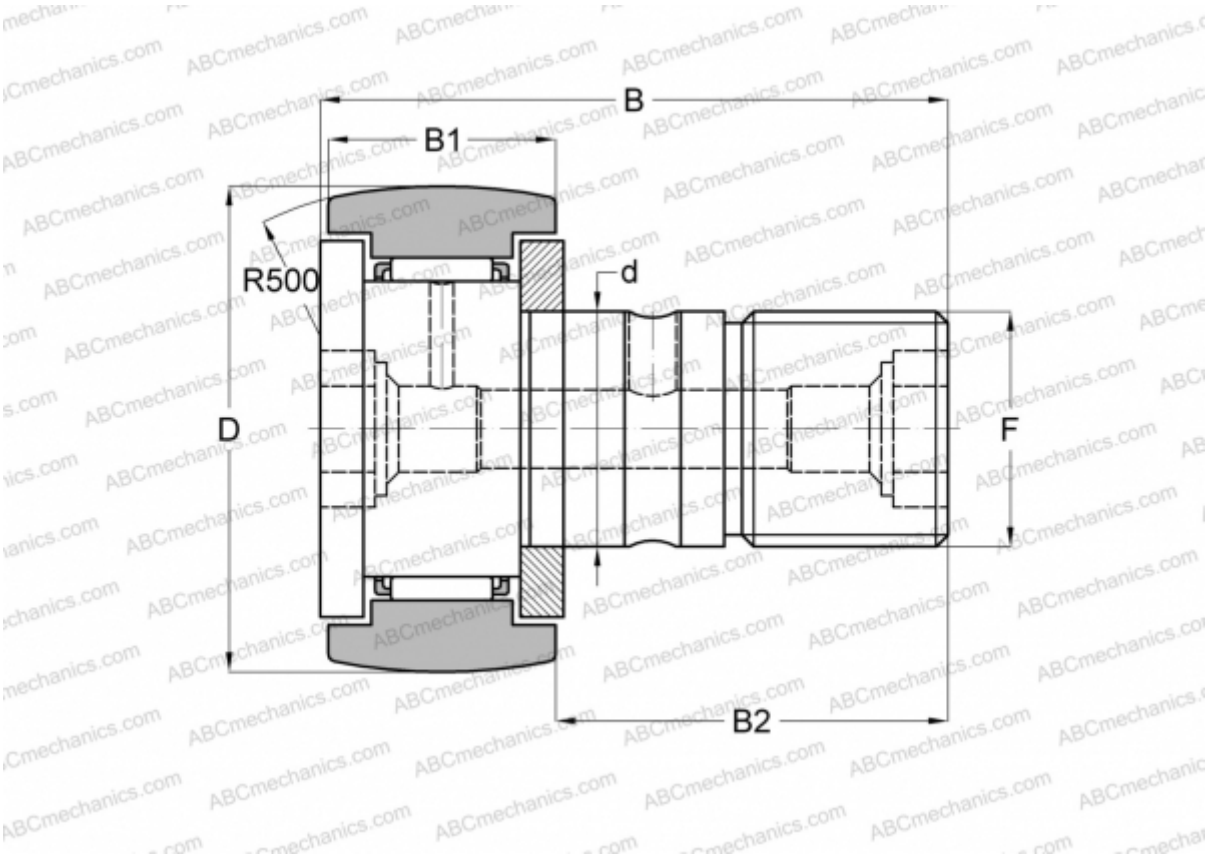




CF 4 BR IKO

Cam followers

TYPE: Roller bearings, Stud type track rollers, With axial guidance, gap seals on both side, hex hole



Technical specification

DIMENSIONS, MM	
d	4,000
D	12,000
B	20,000
B1	8,000
B2	11,000
F	M4x0.7
WEIGHT, KG	
	0,007
MANUFACTURER	
	IKO
INTERCHANGE	
ABC	CF 4 BR
CALCULATION DATA	
Basic dynamic load rating, C	2,070 kN
Basic static load rating, Co	1,590 kN

