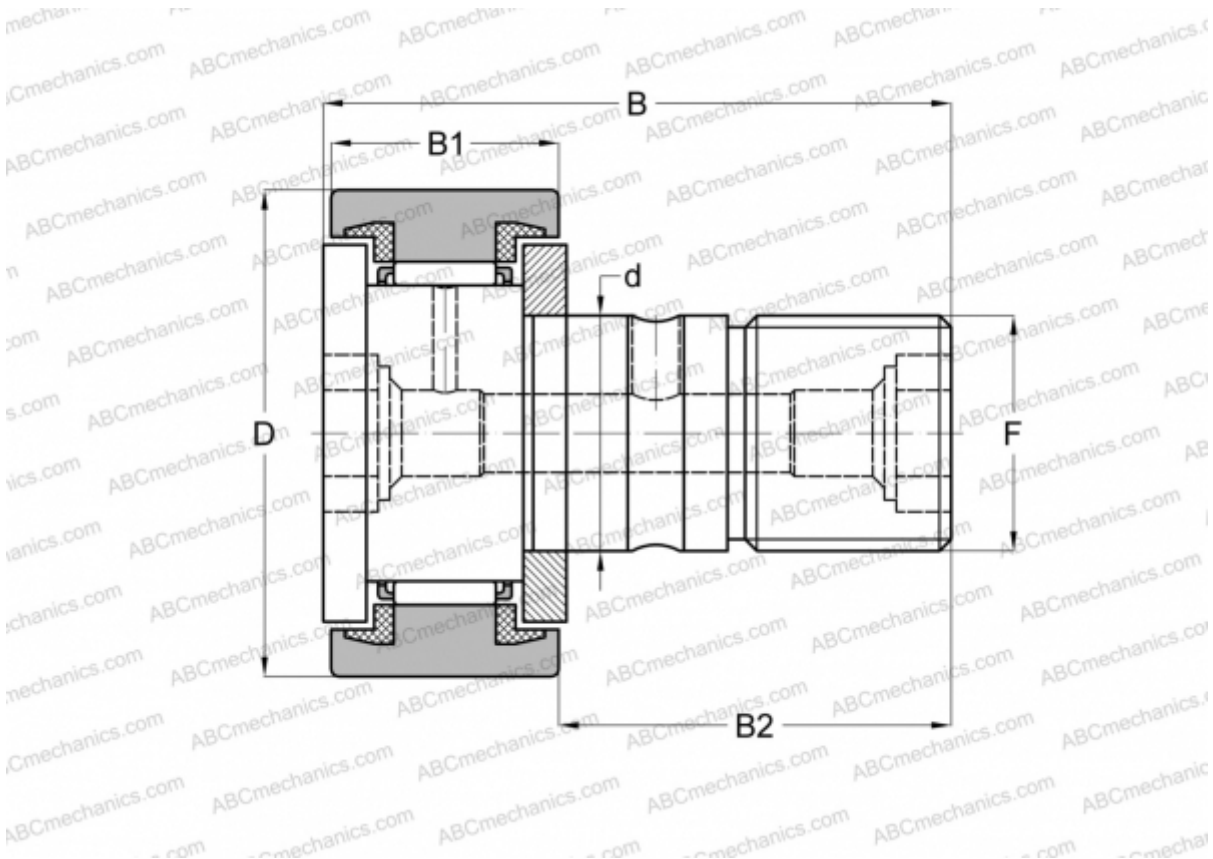




CF 4 BUU ABC

Cam followers

TYPE: Roller bearings, Stud type track rollers, With axial guidance, sealing rings on both sides, cylindrical outer ring, hex socket



Technical specification

DIMENSIONS, MM	
d	4,000
D	12,000
B	20,000
B1	8,000
B2	11,000
F	M4x0.7
WEIGHT, KG	
	0,007
MANUFACTURER	
	ABC
INTERCHANGE	
IKO	CF 4 BUU

