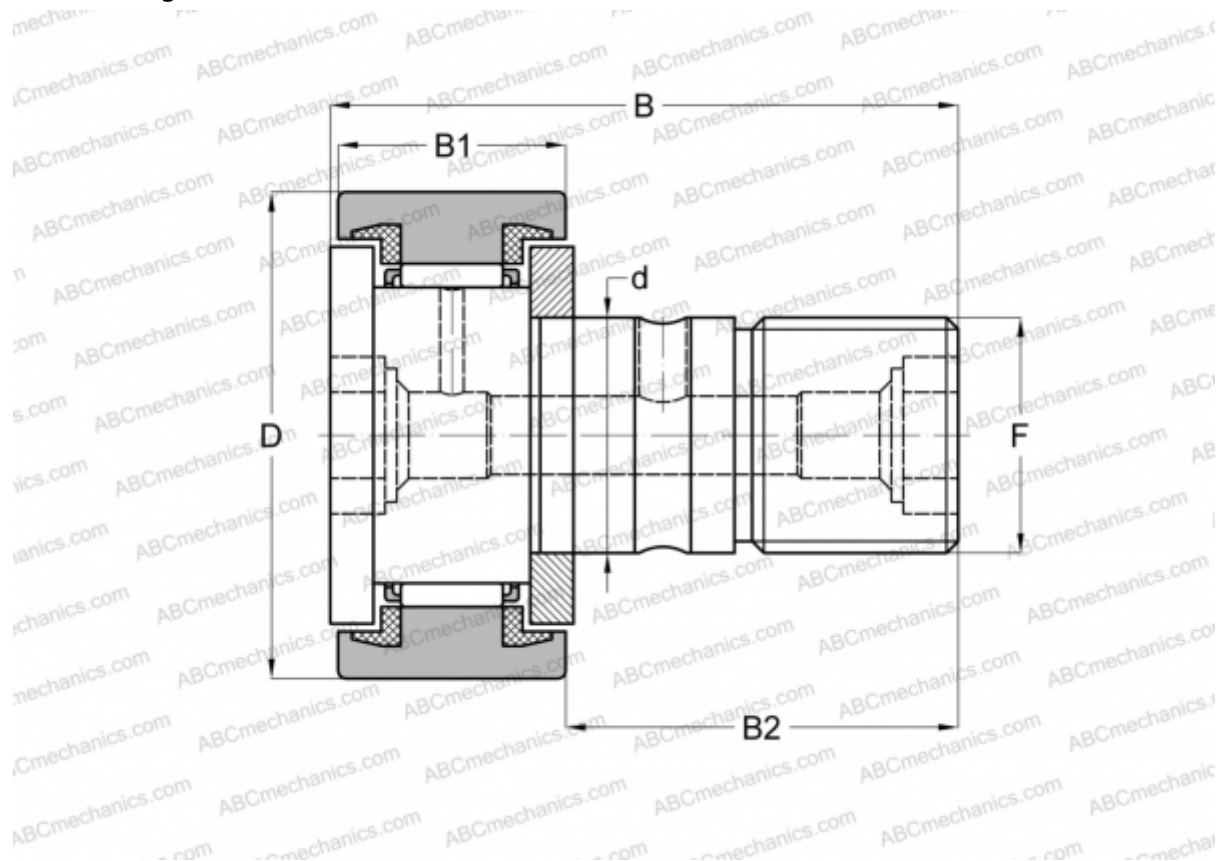


## CF 20 BUU IKO

Cam followers

TYPE: Roller bearings, Stud type track rollers, With axial guidance, sealing rings on both sides, cylindrical outer ring, hex socket



### Technical specification

#### DIMENSIONS, MM

d	20,000
D	52,000
B	66,100
B1	24,000
B2	40,500
F	M20x1.5

**WEIGHT, KG** 0,460

**MANUFACTURER** [IKO](#)

#### INTERCHANGE

ABC	<a href="#">CF 20 BUU</a>
INA	<a href="#">KR 52 PPXSK</a>
SKF	<a href="#">KR 52 PPXSK</a>
McGill	<a href="#">MCFR-52-SB</a>

#### CALCULATION DATA

Basic dynamic load rating, C	20,700 kN
Basic static load rating, Co	34,600 kN