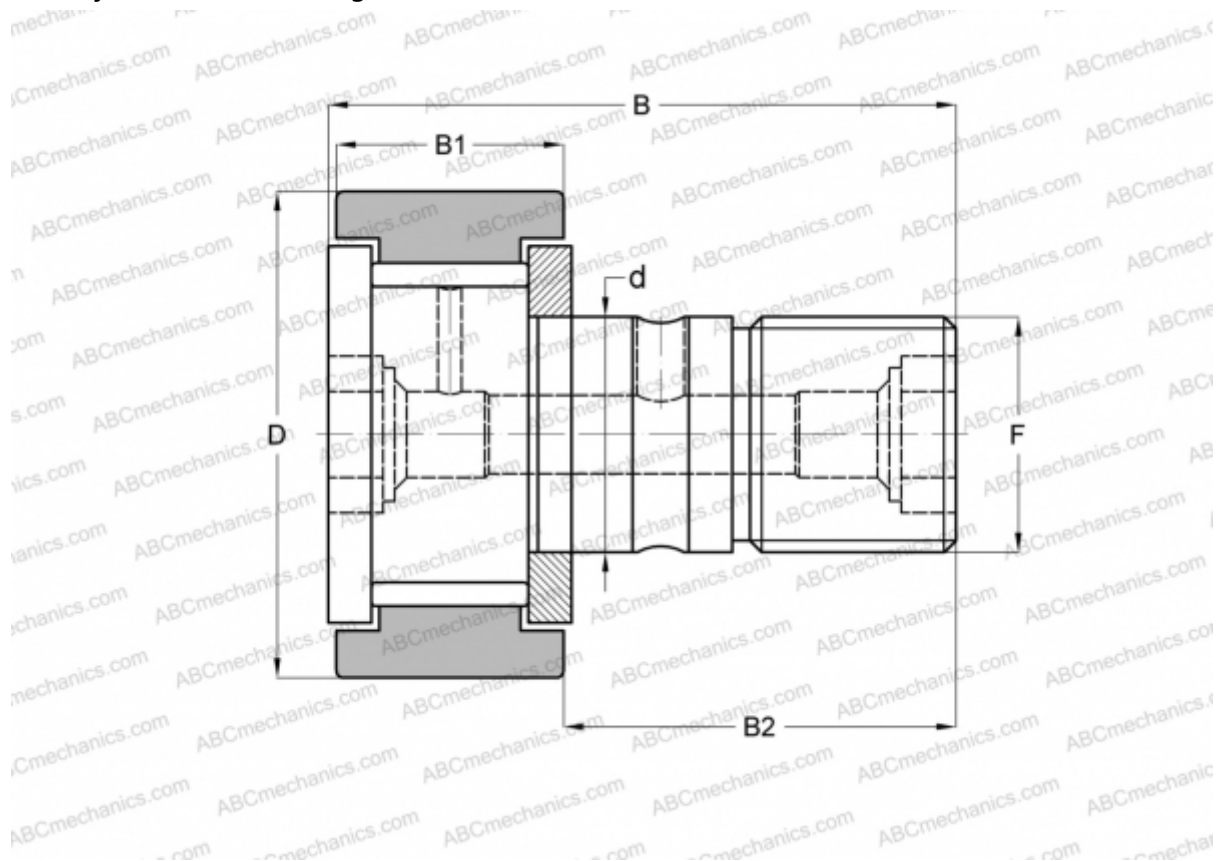


KRV 62 X SKF

Cam followers

TYPE: Roller bearings, Stud type track rollers, With axial guidance, full complement bearing, gap seal on both side, cylindrical outer ring



Technical specification

DIMENSIONS, MM

d	24,000
D	62,000
B	80,000
B1	29,000
B2	49,500
F	M 24x1.5

WEIGHT, KG 0,787

MANUFACTURER [SKF](#)

INTERCHANGE

ABC	KRV 62 X
INA	KRV 62 X
IKO	CF 24 V
McGill	MCF-62-X

CALCULATION DATA

Basic dynamic load rating, C	31,400 kN
Basic static load rating, Co	72,000 kN
Fatigue load limit, Pu	9,000 kN
Limiting speed	1700 r/min