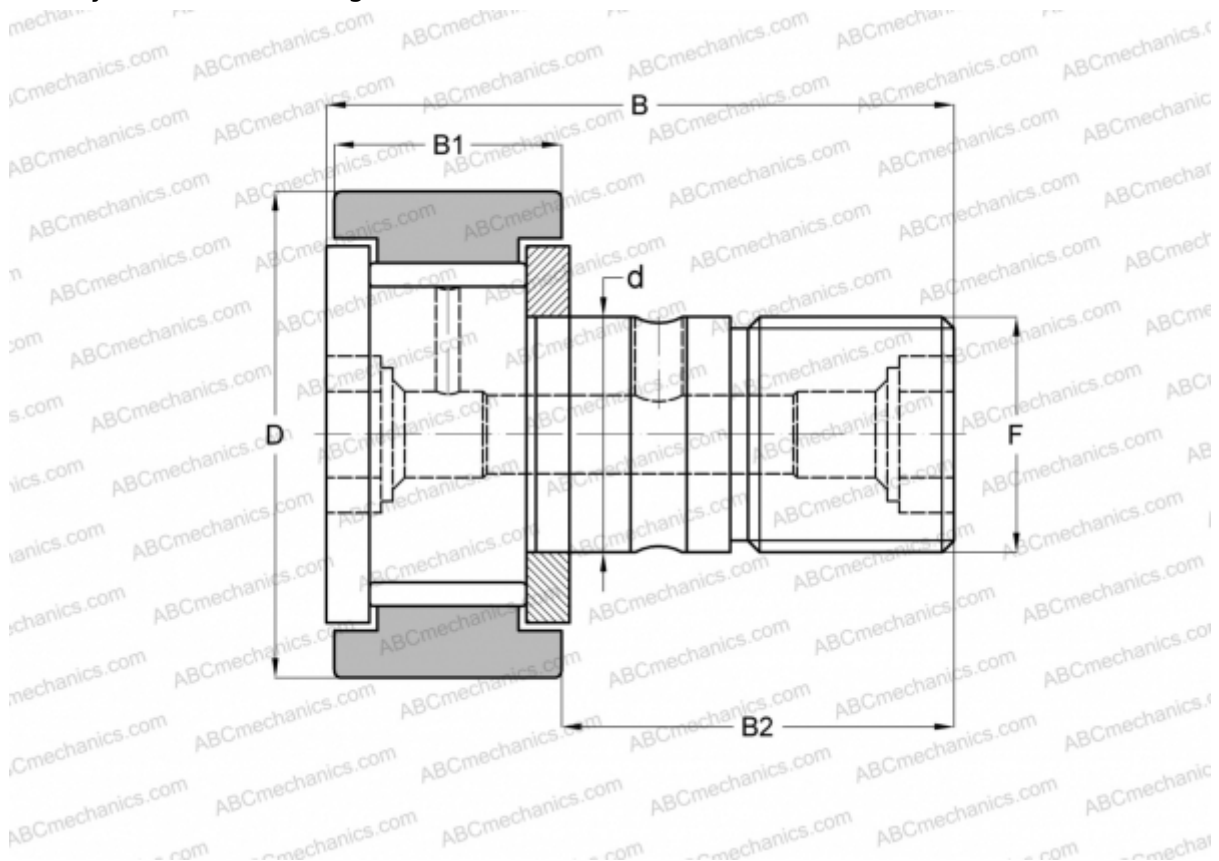


CFKR 35 V ABC

Cam followers

TYPE: Roller bearings, Stud type track rollers, With axial guidance, full complement bearing, gap seal on both side, cylindrical outer ring, double hex hole



Technical specification

DIMENSIONS, MM

d	16,000
D	35,000
B	52,100
B1	18,000
B2	32,500
F	M16x1.5

WEIGHT, KG 0,168

MANUFACTURER [ABC](#)

INTERCHANGE

IKO	CFKR 35 V
JNS	CF 16 V-AB
THK	CF 16 V-AB