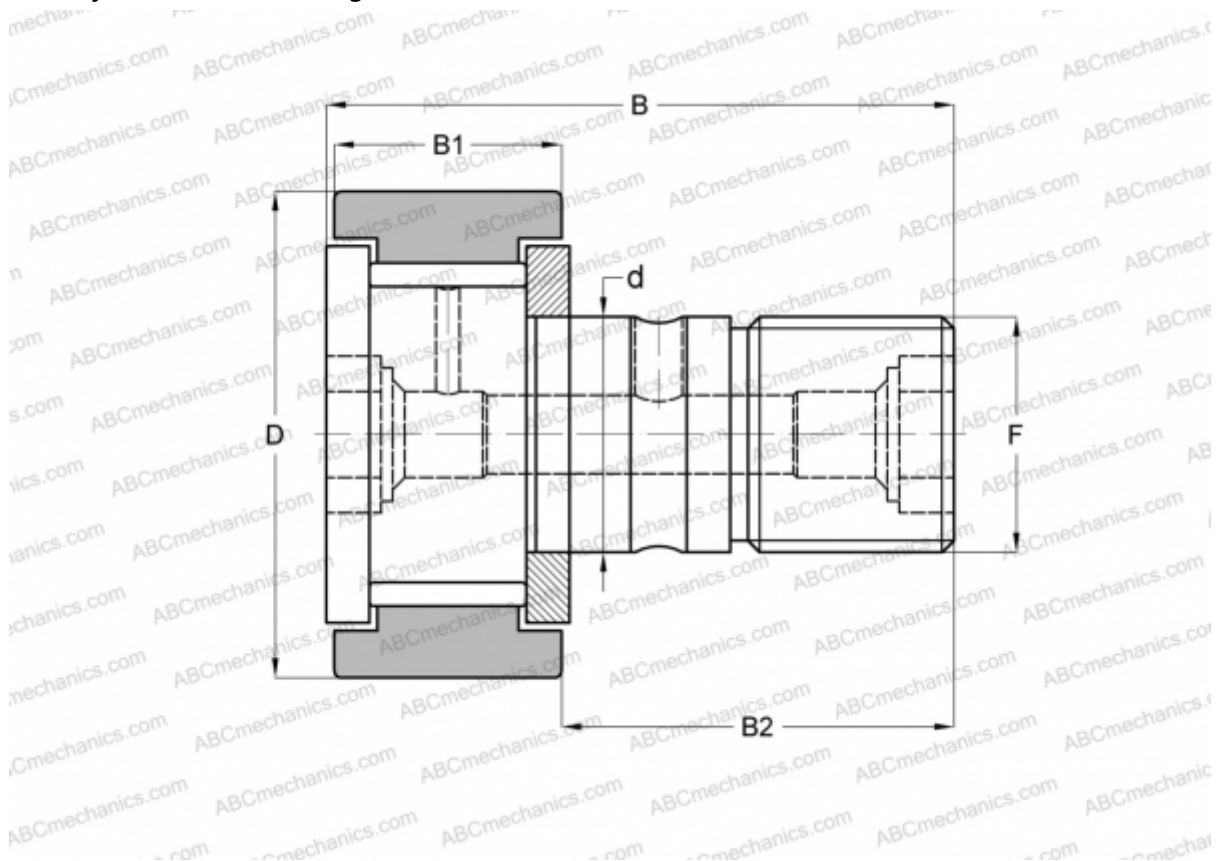


CF 20 V-AB THK

Cam followers

TYPE: Roller bearings, Stud type track rollers, With axial guidance, full complement bearing, gap seal on both side, cylindrical outer ring, double hex hole



Technical specification

DIMENSIONS, MM

d	20,000
D	52,000
B	66,100
B1	24,000
B2	40,500
F	M20x1.5

WEIGHT, KG 0,458

MANUFACTURER [THK](#)

INTERCHANGE

ABC	CFKR 52 V
IKO	CFKR 52 V
JNS	CF 20 V-AB